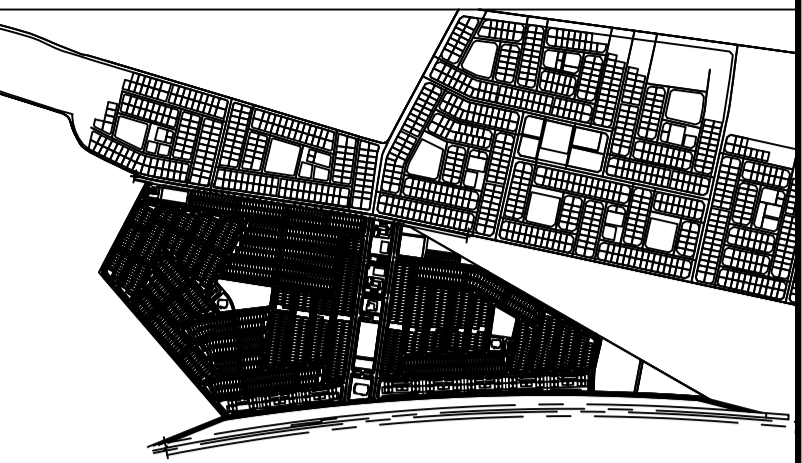


**KEY PLAN:** مفتاح الخريطة



- NOTES: -**
- 1- ALL DIMENSIONS ARE IN MILLIMETER UNLESS OTHERWISE INDICATED.
  - 2- THIS DRAWING TO BE READ IN CONJUNCTION WITH ALL OTHER CONTRACT DRAWINGS AND SPECIFICATIONS.
  - 3- PIPE DIAMETERS ARE SHOWN IN MILLIMETERS FOR NOMINAL DIAMETERS UNLESS OTHERWISE INDICATED.
  - 4- ALL PIPE DIAMETER SHALL BE PN 16 FOR HDPE SDR 11.
  - 5- ALL BUILDING TIE-IN PIPES DIAMETERS AND LOCATIONS SHOULD BE COORDINATED WITH PLUMBING DRAWINGS BEFORE CONSTRUCTION.
  - 6- THE CONTRACTOR SHOULD COORDINATE WITH ALL OTHER PROPOSED, EXISTING UTILITIES FEATURES, STRUCTURES AND FOUNDATION BEFORE CONSTRUCTION.
  - 7- PIPES SHALL BE LAID SUCH THAT THE MINIMUM SOIL COVER OVER PIPE CROWN IS 1.2 METER, IN CASE OF COVER LESS THAN 1M CONCRETE ENCASUREMENT SHOULD BE PROVIDED.
  - 8- ALL BURIED DUCTILE IRON PIPES, FITTING AND VALVES WILL WRAPPED WITH POLYETHYLENE COATING.
  - 9- CONTRACTOR SHALL RETRIEVE AND VERIFY ACCURACY OF ALL RELEVANT EXISTING AS-BUILT DRAWINGS AND DOCUMENTS RELATED TO THE WORK.
  - 10- CONTRACTOR SHALL CARRY OUT AND SHALL BE RESPONSIBLE FOR THE COMPLETE SHOP DRAWINGS INCLUDING UPDATE AND RE-ISSUING THE SUBMITTED DRAWINGS AFTER INCORPORATING ACTUAL SITE DATA.
  - 11- FOR POTABLE WATER DETAILS REFER TO DETAIL DRAWINGS (1418DF-QTF(2)-220-I-PS-103D01 TO 1418DF-QTF(2)-220-I-PS-103D01-D21)
  - 12- THE MENTIONED PIPE QATIF 2/ LINE DIAMETER IS NOMINAL OUTSIDE PIPE DIAMETER FOR HDPE AND NOMINAL INSIDE PIPE DIAMETER FOR DI PIPES.
  - 13- FOR UTILITY CORRIDOR AND CORRIDOR CROSS SECTION REFER TO SHEETS NO. (I-PS-600)
  - 14- HOUSE CONNECTION LOCATIONS ARE INDICATIVE, FOR EXACT LOCATIONS REFER TO THE MOMRA UTILITY ARRANGEMENT STANDARD DETAILS.
  - 15- ALL LEVELS ARE IN METERS AND REFERENCED TO MEAN SEA LEVEL (MSL), UNLESS OTHERWISE INDICATED.
  - 16- FIRE HYDRANTS ARE SPACED TO SERVE AN AREA OF 150 M DIAMETERS FOR RESIDENTIAL PREMISES AND 90M FOR COMMERCIAL PREMISES. FIRE HYDRANTS IN THE POTABLE WATER NETWORK ARE PROPOSED FOR 20 PSI PRESSURE, TO FILL FIRE TRUCKS ONLY, NOT TO DIRECT FIRE FIGHTING.

- LEGEND: -**
- 160 PW Ø160mm HDPE
  - 250 PW Ø250mm HDPE
  - 315 PW Ø315mm HDPE
  - 355 PW Ø355mm HDPE
  - 400 PW Ø400mm DI
  - PROJECT BOUNDARY
  - BURIED GATE VALVE REDUCER
  - FIRE HYDRANT
  - WATER FLOW METER CHAMBER
  - Ø32mm SINGLE TIE-IN CONNECTION
  - Ø63mm PUBLIC TIE-IN CONNECTION
  - Ø32mm Ø50mm DOUBLE TIE-IN CONNECTION
  - AIR VALVE CHAMBER(AVC)
  - DRAIN VALVE CHAMBER(WVC)
  - END CAP WITH CONCRETE BLOCK
  - SINGLE SHUT OFF VALVE CHAMBER(SSV)
  - THREE SHUT OFF VALVE CHAMBER(TSV)
  - HORIZONTAL BEND
  - TEE

00	ISSUE FOR APPROVAL / SHOPDRAWING	10/2023
	صادرة من اجل المراجعة	اليوم
	ISSUED FOR / REVISION	DATE
		BY

PROJECT TITLE: **GRANT LANDS PROJECT**

CLIENT:

CONSULTANT:

ENGINEERING CONTRACTOR:

DESIGN ITEM: **INFRASTRUCTURE**

DRAWING TITLE: **QATIF SITE 2 POTABLE WATER AND FIRE FIGHTING NETWORK GENERAL LAYOUT**

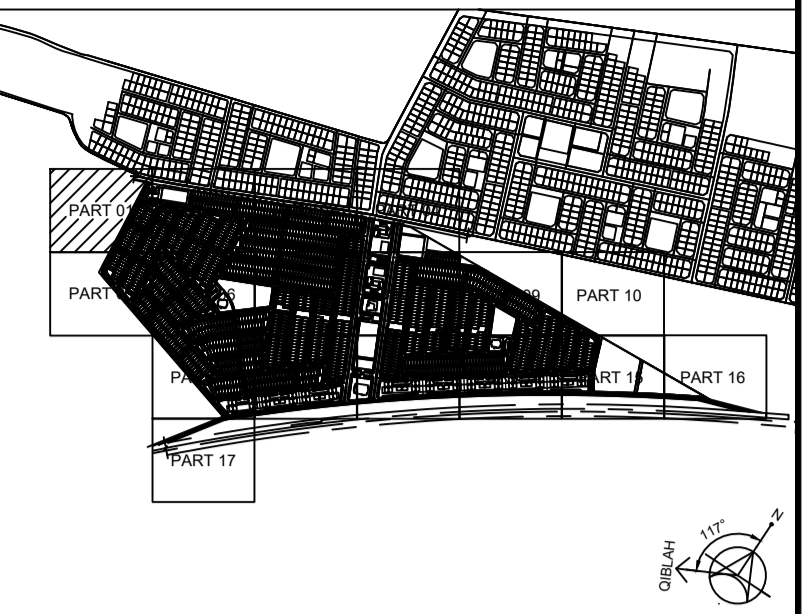
DRAWING NO:	1418DF-QTF(2)-220-I-PS-101M	ISSUE NO. / REV. NO.	0
PROJECT NO:	1418DF	PHASE:	AT SD
START DATE:	OCT 2023	SCALE:	1:500
DRAWN BY:	مهندس محمد بن قائل	CHECKED BY:	مهندس محمد بن قائل
DATE:		APPROVED:	
SIGN:		SIGN:	





MATCH QATIF 2/ LINE DWG. NO. 1418DF-QTF(2)-220-I-PS-101P5

KEY PLAN: مفتاح الخريطة



- NOTES: -
- 1- ALL DIMENSIONS ARE IN MILLIMETER UNLESS OTHERWISE INDICATED.
  - 2- THIS DRAWING TO BE READ IN CONJUNCTION WITH ALL OTHER CONTRACT DRAWINGS AND SPECIFICATIONS.
  - 3- PIPE DIAMETERS ARE SHOWN IN MILLIMETERS FOR NOMINAL DIAMETERS UNLESS OTHERWISE INDICATED.
  - 4- ALL PIPE DIAMETER SHALL BE PN 16 FOR HDPE SDR 11.
  - 5- ALL BUILDING TIE-IN PIPES DIAMETERS AND LOCATIONS SHOULD BE COORDINATED WITH PLUMBING DRAWINGS BEFORE CONSTRUCTION.
  - 6- THE CONTRACTOR SHOULD COORDINATE WITH ALL OTHER PROPOSED, EXISTING UTILITIES, FEATURES, STRUCTURES AND FOUNDATION BEFORE CONSTRUCTION.
  - 7- PIPES SHALL BE LAID SUCH THAT THE MINIMUM SOIL COVER OVER PIPE CROWN IS 1.2 METER, IN CASE OF COVER LESS THAN 1M CONCRETE ENCASMENT SHOULD BE PROVIDED.
  - 8- ALL BURIED DUCTILE IRON PIPES, FITTING AND VALVES WILL WRAPPED WITH POLYETHYLENE COATING.
  - 9- CONTRACTOR SHALL RETRIEVE AND VERIFY ACCURACY OF ALL RELEVANT EXISTING AS-BUILT DRAWINGS AND DOCUMENTS RELATED TO THE WORK.
  - 10- CONTRACTOR SHALL CARRY OUT AND SHALL BE RESPONSIBLE FOR THE COMPLETE SHOP DRAWINGS INCLUDING UPDATE AND RE-ISSUING THE SUBMITTED DRAWINGS AFTER INCORPORATING ACTUAL SITE DATA.
  - 11- FOR POTABLE WATER DETAILS REFER TO DETAIL DRAWINGS (1418DF-QTF(2)-220-I-PS-103D01 TO 1418DF-QTF(2)-220-I-PS-103D01-D21)
  - 12- THE MENTIONED PIPE QATIF 2/ LINE DIAMETER IS NOMINAL OUTSIDE PIPE DIAMETER FOR HDPE AND NOMINAL INSIDE PIPE DIAMETER FOR DI PIPES.
  - 13- FOR UTILITY CORRIDOR AND CORRIDOR CROSS SECTION REFER TO SHEETS NO. (I-PS-600)
  - 14- HOUSE CONNECTION LOCATIONS ARE INDICATIVE, FOR EXACT LOCATIONS REFER TO THE MOMRA UTILITY ARRANGEMENT STANDARD DETAILS.
  - 15- ALL LEVELS ARE IN METERS AND REFERENCED TO MEAN SEA LEVEL (MSL), UNLESS OTHERWISE INDICATED.
  - 16- FIRE HYDRANTS ARE SPACED TO SERVE AN AREA OF 150 M DIAMETERS FOR RESIDENTIAL PREMISES AND 90M FOR COMMERCIAL PREMISES. FIRE HYDRANTS IN THE POTABLE WATER NETWORK ARE PROPOSED FOR 20 PSI PRESSURE, TO FILL FIRE TRUCKS ONLY, NOT TO DIRECT FIRE FIGHTING.

- LEGEND: -
- 160 PW Ø160mm HDPE
  - 250 PW Ø250mm HDPE
  - 315 PW Ø315mm HDPE
  - 355 PW Ø355mm HDPE
  - PW Ø400mm DI
  - PROJECT BOUNDARY
  - BURIED GATE VALVE
  - REDUCER
  - FIRE HYDRANT
  - WATER FLOW METER CHAMBER
  - Ø32mm SINGLE TIE-IN CONNECTION
  - Ø63mm PUBLIC TIE IN CONNECTION
  - Ø32mm / Ø50mm DOUBLE TIE-IN CONNECTION
  - AIR VALVE CHAMBER(AVC)
  - DRAIN VALVE CHAMBER(WVC)
  - END CAP WITH CONCRETE BLOCK
  - SINGLE SHUT OFF VALVE CHAMBER(SSV)
  - THREE SHUT OFF VALVE CHAMBER(TSV)
  - HORIZONTAL BEND
  - TEE

00	ISSUE FOR APPROVAL / SHOPDRAWING	10/2023
	صدر من اجل الموافقة	اليوم
	ISSUED FOR / REVISION	DATE

PROJECT TITLE: **GRANT LANDS PROJECT**

CLIENT:

CONSULTANT:

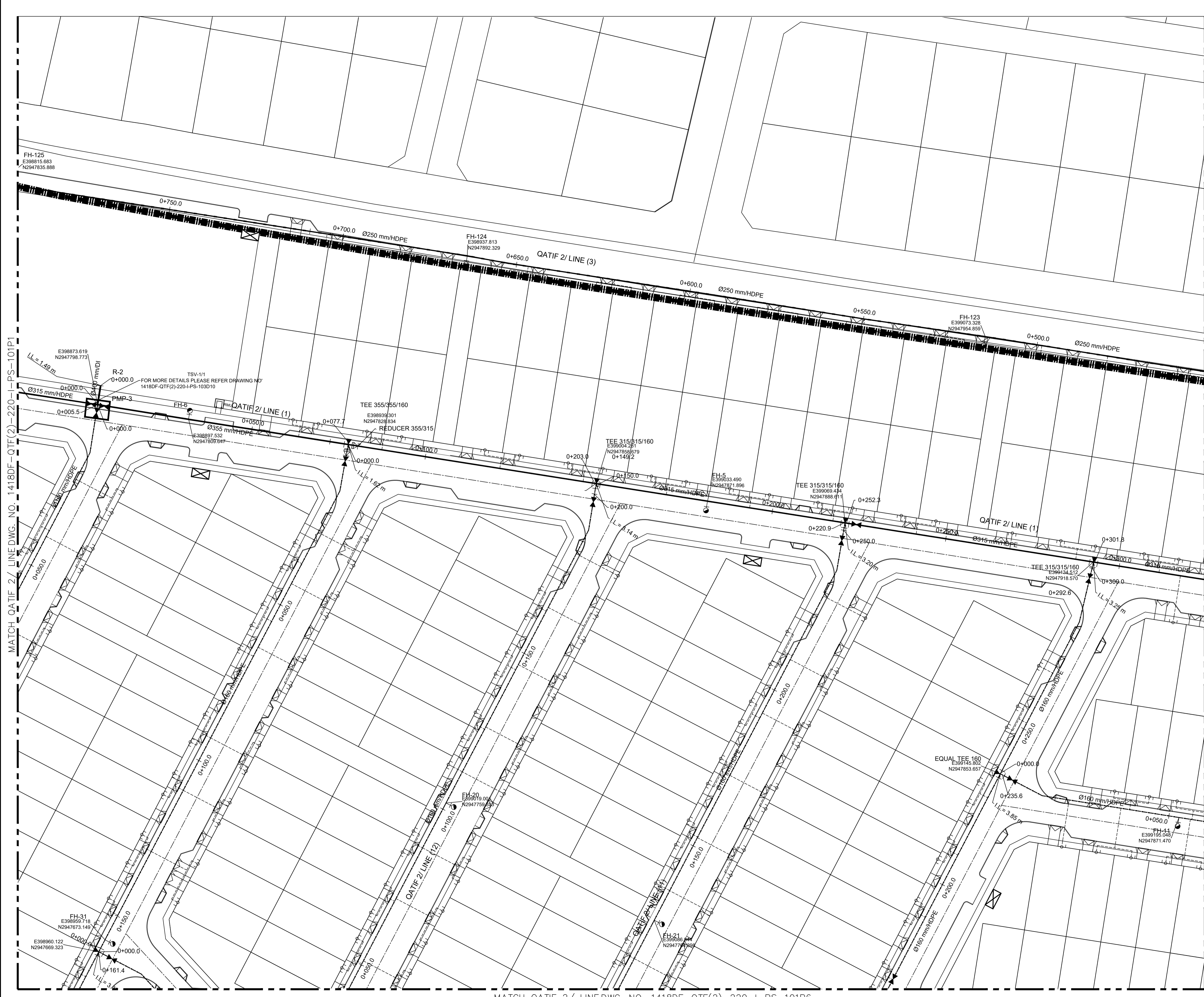
ENGINEERING CONTRACTOR:

DESIGN ITEM: **INFRASTRUCTURE**

DRAWING TITLE: **QATIF SITE 2 POTABLE WATER AND FIRE FIGHTING NETWORK PART PLAN ( 1 OF 17 )**

DRAWING NO:	1418DF-QTF(2)-220-I-PS-101P1	تاريخ المخطط	10/2023	مراجعة	0
PROJECT NO:	1418DF	تاريخ البدء	10/2023	مراجعة	0
SCALE:	1:500	مخطط	ASD	مراجعة	0
PHASE:	ASD	مخطط	ASD	مراجعة	0
APPROVED BY:		مخطط	ASD	مراجعة	0





- NOTES: -
- 1- ALL DIMENSIONS ARE IN MILLIMETER UNLESS OTHERWISE INDICATED.
  - 2- THIS DRAWING TO BE READ IN CONJUNCTION WITH ALL OTHER CONTRACT DRAWINGS AND SPECIFICATIONS.
  - 3- PIPE DIAMETERS ARE SHOWN IN MILLIMETERS FOR NOMINAL DIAMETERS UNLESS OTHERWISE INDICATED.
  - 4- ALL PIPE DIAMETER SHALL BE PN 16 FOR HDPE SDR 11.
  - 5- ALL BUILDING TIE-IN PIPES DIAMETERS AND LOCATIONS SHOULD BE COORDINATED WITH PLUMBING DRAWINGS BEFORE CONSTRUCTION.
  - 6- THE CONTRACTOR SHOULD COORDINATE WITH ALL OTHER PROPOSED, EXISTING UTILITIES, FEATURES, STRUCTURES AND FOUNDATION BEFORE CONSTRUCTION.
  - 7- PIPES SHALL BE LAID SUCH THAT THE MINIMUM SOIL COVER OVER PIPE CROWN IS 1.2 METER, IN CASE OF COVER LESS THAN 1M CONCRETE ENCASMENT SHOULD BE PROVIDED.
  - 8- ALL BURIED DUCTILE IRON PIPES, FITTING AND VALVES WILL WRAPPED WITH POLYETHYLENE COATING.
  - 9- CONTRACTOR SHALL RETRIEVE AND VERIFY ACCURACY OF ALL RELEVANT EXISTING AS-BUILT DRAWINGS AND DOCUMENTS RELATED TO THE WORK.
  - 10- CONTRACTOR SHALL CARRY OUT AND SHALL BE RESPONSIBLE FOR THE COMPLETE SHOP DRAWINGS INCLUDING UPDATE AND RE-ISSUING THE SUBMITTED DRAWINGS AFTER INCORPORATING ACTUAL SITE DATA.
  - 11- FOR POTABLE WATER DETAILS REFER TO DETAIL DRAWINGS (1418DF-QTF(2)-220-I-PS-103D01 TO 1418DF-QTF(2)-220-I-PS-103D01-D21)
  - 12- THE MENTIONED PIPE QATIF 2/ LINE DIAMETER IS NOMINAL OUTSIDE PIPE DIAMETER FOR HDPE AND NOMINAL INSIDE PIPE DIAMETER FOR DI PIPES.
  - 13- FOR UTILITY CORRIDOR AND CORRIDOR CROSS SECTION REFER TO SHEETS NO. (I-PS-600)
  - 14- HOUSE CONNECTION LOCATIONS ARE INDICATIVE, FOR EXACT LOCATIONS REFER TO THE MOMRA UTILITY ARRANGEMENT STANDARD DETAILS.
  - 15- ALL LEVELS ARE IN METERS AND REFERENCED TO MEAN SEA LEVEL (MSL), UNLESS OTHERWISE INDICATED.
  - 16- FIRE HYDRANTS ARE SPACED TO SERVE AN AREA OF 150 M DIAMETERS FOR RESIDENTIAL PREMISES AND 90M FOR COMMERCIAL PREMISES. FIRE HYDRANTS IN THE POTABLE WATER NETWORK ARE PROPOSED FOR 20 PSI PRESSURE, TO FILL FIRE TRUCKS ONLY, NOT TO DIRECT FIRE FIGHTING.

- LEGEND: -
- 160 PW Ø160mm HDPE
  - 250 PW Ø250mm HDPE
  - 315 PW Ø315mm HDPE
  - 355 PW Ø355mm HDPE
  - 400 PW Ø400mm DI
  - PROJECT BOUNDARY
  - BURIED GATE VALVE
  - REDUCER
  - FIRE HYDRANT
  - WATER FLOW METER CHAMBER
  - SINGLE TIE-IN CONNECTION
  - PUBLIC TIE IN CONNECTION
  - DOUBLE TIE-IN CONNECTION
  - AIR VALVE CHAMBER(AVC)
  - DRAIN VALVE CHAMBER(WVC)
  - END CAP WITH CONCRETE BLOCK
  - SINGLE SHUT OFF VALVE CHAMBER(SSV)
  - THREE SHUT OFF VALVE CHAMBER(TSV)
  - HORIZONTAL BEND
  - TEE

00	ISSUE FOR APPROVAL / SHOPDRAWING	10/2023
	مصدر من اجل الموافقة	التاريخ
	ISSUED FOR / REVISION	DATE
	مصدر من اجل الموافقة	التاريخ

PROJECT TITLE: **GRANT LANDS PROJECT**

CLIENT:  **الهيئة العامة للغراند لاندز**

CONSULTANT:  **دار الرياض**  
DESIGN & CONSTRUCTION MANAGEMENT SERVICES

ENGINEERING CONTRACTOR:  **الرواف للمقاولات**

DESIGN ITEM: **INFRASTRUCTURE**

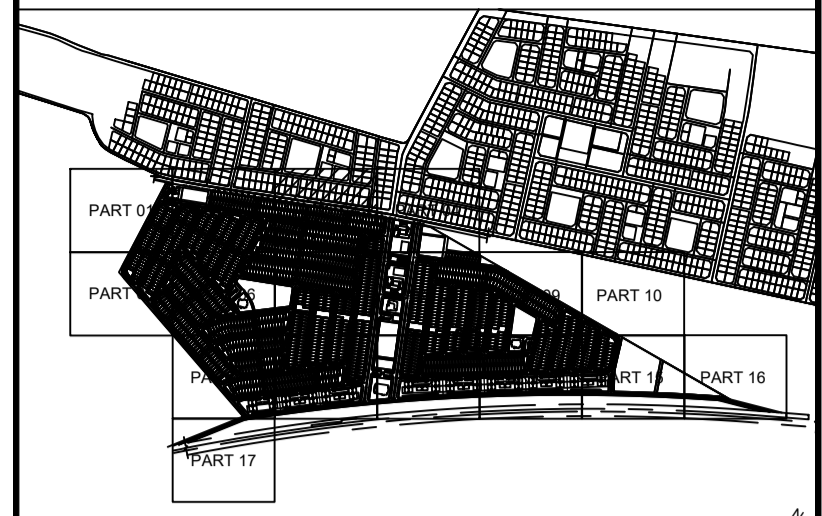
DRAWING TITLE: **QATIF SITE 2 POTABLE WATER AND FIRE FIGHTING NETWORK PART PLAN (2 OF 17)**

DRAWING NO: **1418DF-QTF(2)-220-I-PS-101P2**

PROJECT NO: 1418DF-QTF(2)-220-I-PS-101P1  
START DATE: 15 OCT 2023  
SCALE: 1:500  
PHASE: SD  
ISSUE NO. / REV. NO.: 0 / 1

MATCH QATIF 2/ LINE DWG. NO. 1418DF-QTF(2)-220-I-PS-101P6





- NOTES: -
- 1- ALL DIMENSIONS ARE IN MILLIMETER UNLESS OTHERWISE INDICATED.
  - 2- THIS DRAWING TO BE READ IN CONJUNCTION WITH ALL OTHER CONTRACT DRAWINGS AND SPECIFICATIONS.
  - 3- PIPE DIAMETERS ARE SHOWN IN MILLIMETERS FOR NOMINAL DIAMETERS UNLESS OTHERWISE INDICATED.
  - 4- ALL PIPE DIAMETER SHALL BE PN 16 FOR HDPE SDR 11.
  - 5- ALL BUILDING TIE-IN PIPES DIAMETERS AND LOCATIONS SHOULD BE COORDINATED WITH PLUMBING DRAWINGS BEFORE CONSTRUCTION.
  - 6- THE CONTRACTOR SHOULD COORDINATE WITH ALL OTHER PROPOSED, EXISTING UTILITIES, FEATURES, STRUCTURES AND FOUNDATION BEFORE CONSTRUCTION.
  - 7- PIPES SHALL BE LAID SUCH THAT THE MINIMUM SOIL COVER OVER PIPE CROWN IS 1.2 METER, IN CASE OF COVER LESS THAN 1M CONCRETE ENCASMENT SHOULD BE PROVIDED.
  - 8- ALL BURIED DUCTILE IRON PIPES, FITTING AND VALVES WILL WRAPPED WITH POLYETHYLENE COATING.
  - 9- CONTRACTOR SHALL RETRIEVE AND VERIFY ACCURACY OF ALL RELEVANT EXISTING AS-BUILT DRAWINGS AND DOCUMENTS RELATED TO THE WORK.
  - 10- CONTRACTOR SHALL CARRY OUT AND SHALL BE RESPONSIBLE FOR THE COMPLETE SHOP DRAWINGS INCLUDING UPDATE AND RE-ISSUING THE SUBMITTED DRAWINGS AFTER INCORPORATING ACTUAL SITE DATA.
  - 11- FOR POTABLE WATER DETAILS REFER TO DETAIL DRAWINGS (1418DF-QTF(2)-220-I-PS-103D01 TO 1418DF-QTF(2)-220-I-PS-103D01-D21)
  - 12- THE MENTIONED PIPE QATIF 2/ LINE DIAMETER IS NOMINAL OUTSIDE PIPE DIAMETER FOR HDPE AND NOMINAL INSIDE PIPE DIAMETER FOR DI PIPES.
  - 13- FOR UTILITY CORRIDOR AND CORRIDOR CROSS SECTION REFER TO SHEETS NO. (I-PS-600)
  - 14- HOUSE CONNECTION LOCATIONS ARE INDICATIVE, FOR EXACT LOCATIONS REFER TO THE MOMRA UTILITY ARRANGEMENT STANDARD DETAILS.
  - 15- ALL LEVELS ARE IN METERS AND REFERENCED TO MEAN SEA LEVEL (MSL), UNLESS OTHERWISE INDICATED.
  - 16- FIRE HYDRANTS ARE SPACED TO SERVE AN AREA OF 150 M DIAMETERS FOR RESIDENTIAL PREMISES AND 90M FOR COMMERCIAL PREMISES. FIRE HYDRANTS IN THE POTABLE WATER NETWORK ARE PROPOSED FOR 20 PSI PRESSURE, TO FILL FIRE TRUCKS ONLY, NOT TO DIRECT FIRE FIGHTING.

- LEGEND: -
- 160 PW Ø160mm HDPE
  - 250 PW Ø250mm HDPE
  - 315 PW Ø315mm HDPE
  - 355 PW Ø355mm HDPE
  - 400 PW Ø400mm DI
  - PROJECT BOUNDARY
  - BURIED GATE VALVE
  - REDUCER
  - FIRE HYDRANT
  - WATER FLOW METER CHAMBER
  - Ø32mm SINGLE TIE-IN CONNECTION
  - Ø63mm PUBLIC TIE-IN CONNECTION
  - Ø32mm/Ø50mm DOUBLE TIE-IN CONNECTION
  - AIR VALVE CHAMBER(AVC)
  - DRAIN VALVE CHAMBER(WVC)
  - END CAP WITH CONCRETE BLOCK
  - SINGLE SHUT OFF VALVE CHAMBER(SSV)
  - THREE SHUT OFF VALVE CHAMBER(TSV)
  - HORIZONTAL BEND
  - TEE

NO	ISSUE FOR APPROVAL / SHOPDRAWING	10/2023
00	ISSUE FOR APPROVAL / SHOPDRAWING	10/2023
	صدرت من اجل الموافقة	التاريخ
	ISSUED FOR REVISION	DATE
	مراجعة	BY

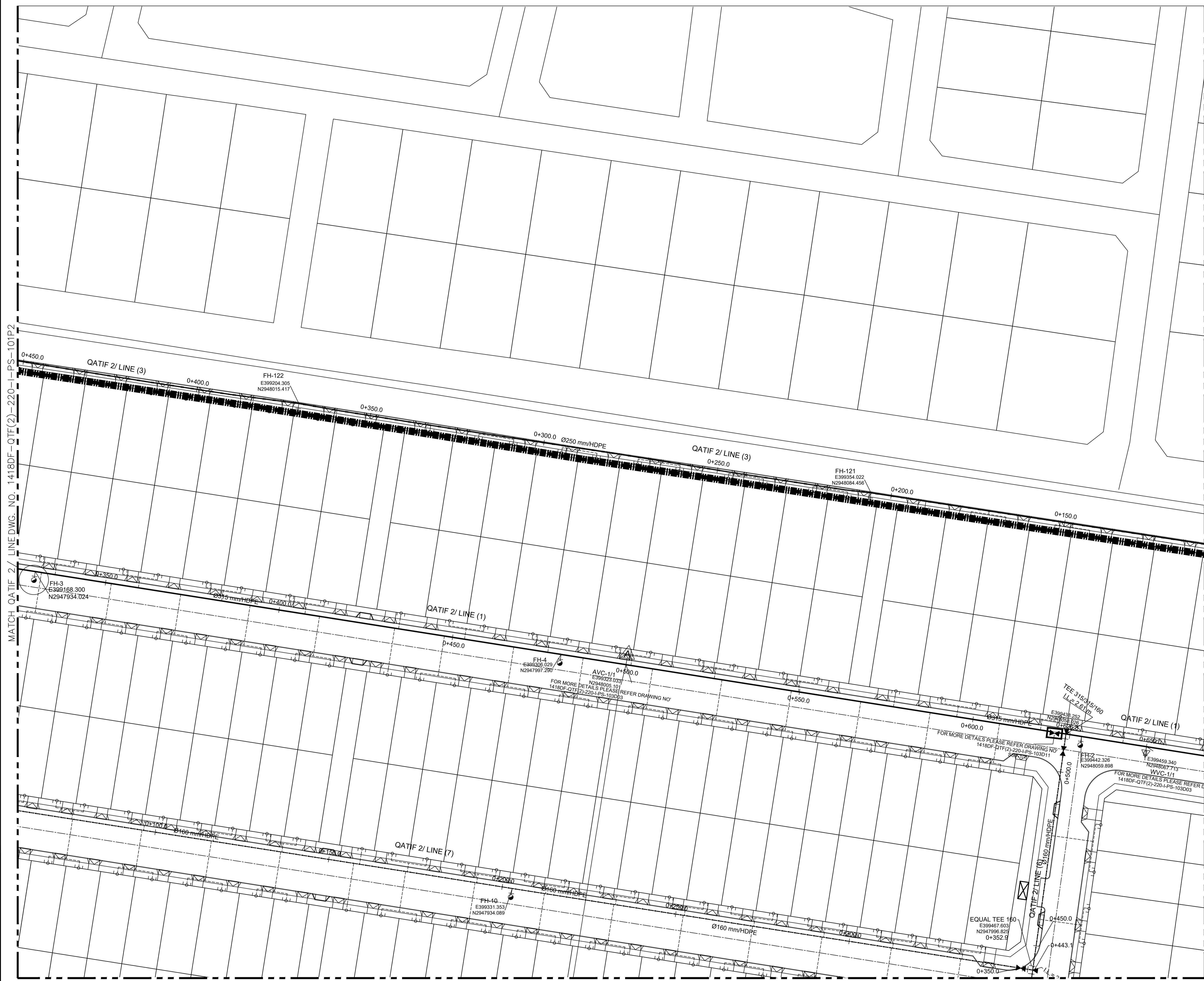
PROJECT TITLE: **GRANT LANDS PROJECT**



DESIGN ITEM: **INFRASTRUCTURE**

DRAWING TITLE: **QATIF SITE 2 POTABLE WATER AND FIRE FIGHTING NETWORK PART PLAN ( 3 OF 17 )**

PROJECT NO	1418DF-QTF(2)-220-I-PS-101P3
PROJECT NO	1418DF-QTF(2)-220-I-PS-101P3
START DATE	15/09/2023
SCALE	1:500
PHASE	AS BUILT
DATE	15/09/2023
ISSUE NO	0
REV NO	0
DRAWN BY	AL SD
CHECKED BY	AL SD
APPROVED BY	AL SD
DATE	15/09/2023
SIGNATURE	

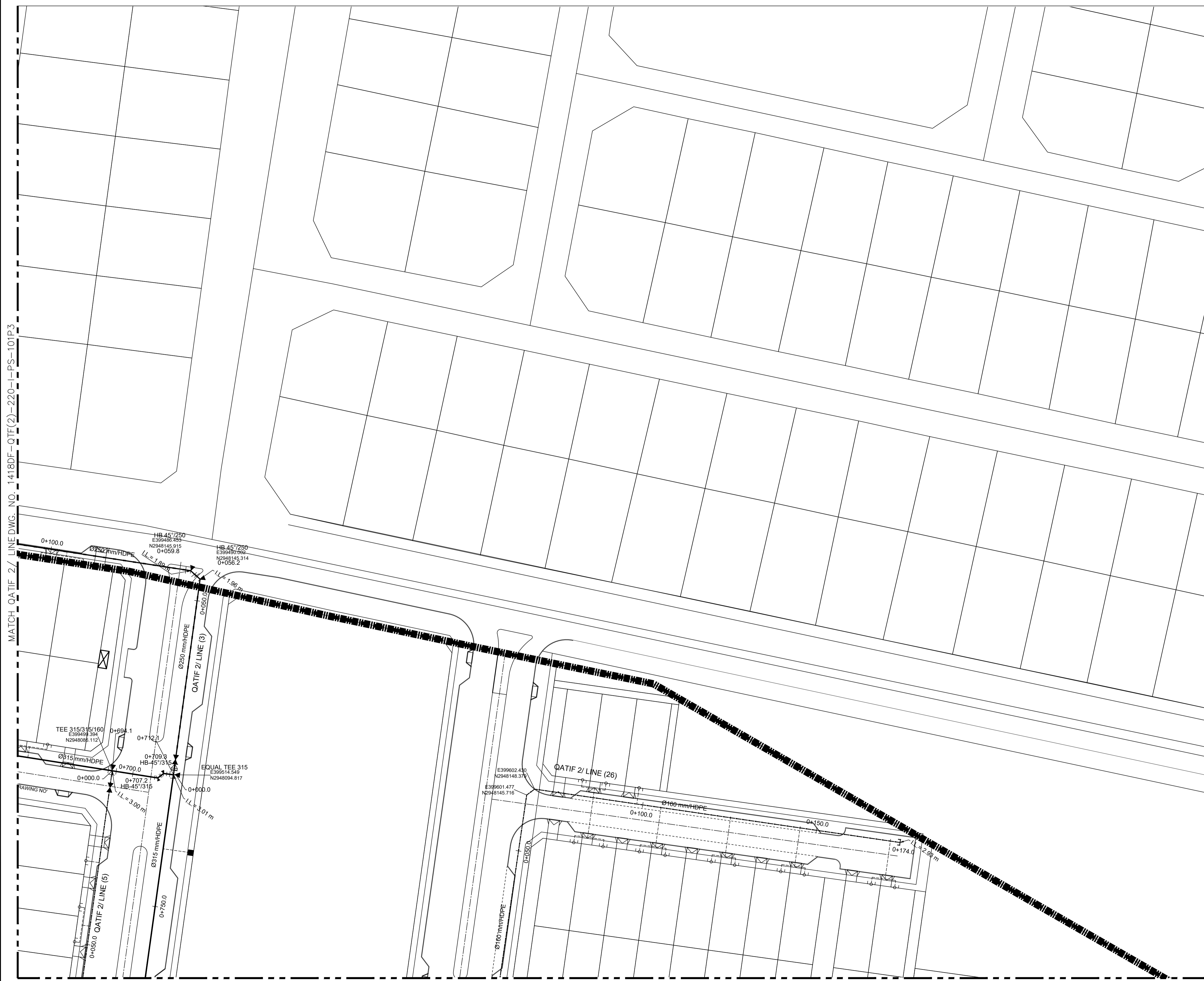


MATCH QATIF 2/ LINE DWG. NO. 1418DF-QTF(2)-220-I-PS-101P2

MATCH QATIF 2/ LINE DWG. NO. 1418DF-QTF(2)-220-I-PS-101P4

MATCH QATIF 2/ LINE DWG. NO. 1418DF-QTF(2)-220-I-PS-101P7

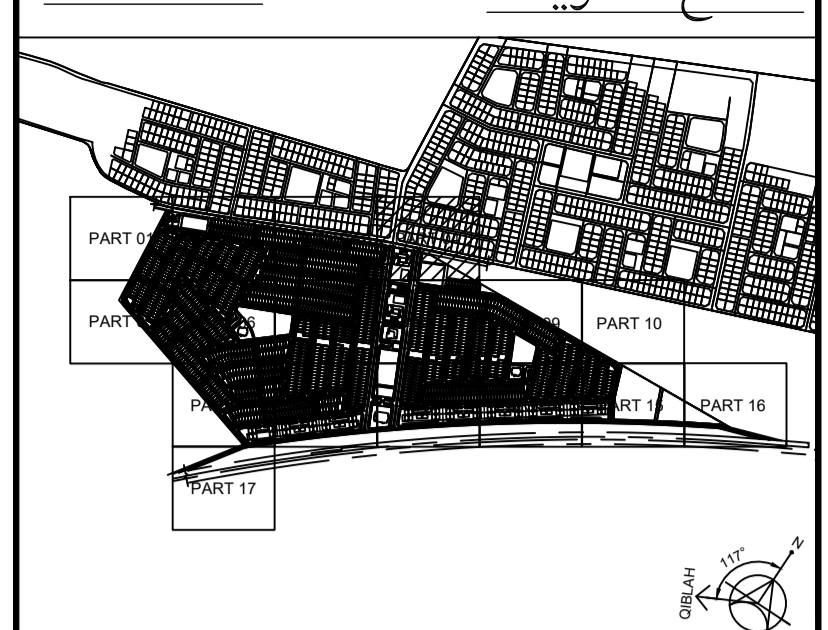




MATCH QATIF 2/ LINE DWG. NO. 1418DF-QTF(2)-220-I-PS-101P3

MATCH QATIF 2/ LINE DWG. NO. 1418DF-QTF(2)-220-I-PS-101P8

**KEY PLAN:** مفتاح الخريطة



- NOTES: -**
- 1- ALL DIMENSIONS ARE IN MILLIMETER UNLESS OTHERWISE INDICATED.
  - 2- THIS DRAWING TO BE READ IN CONJUNCTION WITH ALL OTHER CONTRACT DRAWINGS AND SPECIFICATIONS.
  - 3- PIPE DIAMETERS ARE SHOWN IN MILLIMETERS FOR NOMINAL DIAMETERS UNLESS OTHERWISE INDICATED.
  - 4- ALL PIPE DIAMETER SHALL BE PN 16 FOR HDPE SDR 11.
  - 5- ALL BUILDING TIE-IN PIPES DIAMETERS AND LOCATIONS SHOULD BE COORDINATED WITH PLUMBING DRAWINGS BEFORE CONSTRUCTION.
  - 6- THE CONTRACTOR SHOULD COORDINATE WITH ALL OTHER PROPOSED, EXISTING UTILITIES, FEATURES, STRUCTURES AND FOUNDATION BEFORE CONSTRUCTION.
  - 7- PIPES SHALL BE LAID SUCH THAT THE MINIMUM SOIL COVER OVER PIPE CROWN IS 1.2 METER, IN CASE OF COVER LESS THAN 1M CONCRETE ENGAGEMENT SHOULD BE PROVIDED.
  - 8- ALL BURIED DUCTILE IRON PIPES, FITTING AND VALVES WILL WRAPPED WITH POLYETHYLENE COATING.
  - 9- CONTRACTOR SHALL RETRIEVE AND VERIFY ACCURACY OF ALL RELEVANT EXISTING AS-BUILT DRAWINGS AND DOCUMENTS RELATED TO THE WORK.
  - 10- CONTRACTOR SHALL CARRY OUT AND SHALL BE RESPONSIBLE FOR THE COMPLETE SHOP DRAWINGS INCLUDING UPDATE AND RE-ISSUING THE SUBMITTED DRAWINGS AFTER INCORPORATING ACTUAL SITE DATA.
  - 11- FOR POTABLE WATER DETAILS REFER TO DETAIL DRAWINGS (1418DF-QTF(2)-220-I-PS-103D01 TO 1418DF-QTF(2)-220-I-PS-103D01-D21)
  - 12- THE MENTIONED PIPE QATIF 2/ LINE DIAMETER IS NOMINAL OUTSIDE PIPE DIAMETER FOR HDPE AND NOMINAL INSIDE PIPE DIAMETER FOR DI PIPES.
  - 13- FOR UTILITY CORRIDOR AND CORRIDOR CROSS SECTION REFER TO SHEETS NO. (I-PS-600)
  - 14- HOUSE CONNECTION LOCATIONS ARE INDICATIVE, FOR EXACT LOCATIONS REFER TO THE MOMRA UTILITY ARRANGEMENT STANDARD DETAILS.
  - 15- ALL LEVELS ARE IN METERS AND REFERENCED TO MEAN SEA LEVEL (MSL), UNLESS OTHERWISE INDICATED.
  - 16- FIRE HYDRANTS ARE SPACED TO SERVE AN AREA OF 150 M DIAMETERS FOR RESIDENTIAL PREMISES AND 90M FOR COMMERCIAL PREMISES. FIRE HYDRANTS IN THE POTABLE WATER NETWORK ARE PROPOSED FOR 20 PSI PRESSURE, TO FILL FIRE TRUCKS ONLY, NOT TO DIRECT FIRE FIGHTING.

**LEGEND: -**

	PW Ø160mm HDPE
	PW Ø250mm HDPE
	PW Ø315mm HDPE
	PW Ø355mm HDPE
	PW Ø400mm DI
	PROJECT BOUNDARY
	BURIED GATE VALVE
	REDUCER
	FIRE HYDRANT
	WATER FLOW METER CHAMBER
	SINGLE TIE-IN CONNECTION
	PUBLIC TIE-IN CONNECTION
	DOUBLE TIE-IN CONNECTION
	AIR VALVE CHAMBER(AVC)
	DRAIN VALVE CHAMBER(WVC)
	END CAP WITH CONCRETE BLOCK
	SINGLE SHUT OFF VALVE CHAMBER(SSV)
	THREE SHUT OFF VALVE CHAMBER(TSV)
	HORIZONTAL BEND
	TEE

00	ISSUE FOR APPROVAL / SHOPDRAWING	10/2023
	مصدره من اجل الموافقة	العدد
	ISSUED FOR / REVISION	DATE
		BY

PROJECT TITLE: **GRANT LANDS PROJECT**

CLIENT:

CONSULTANT:

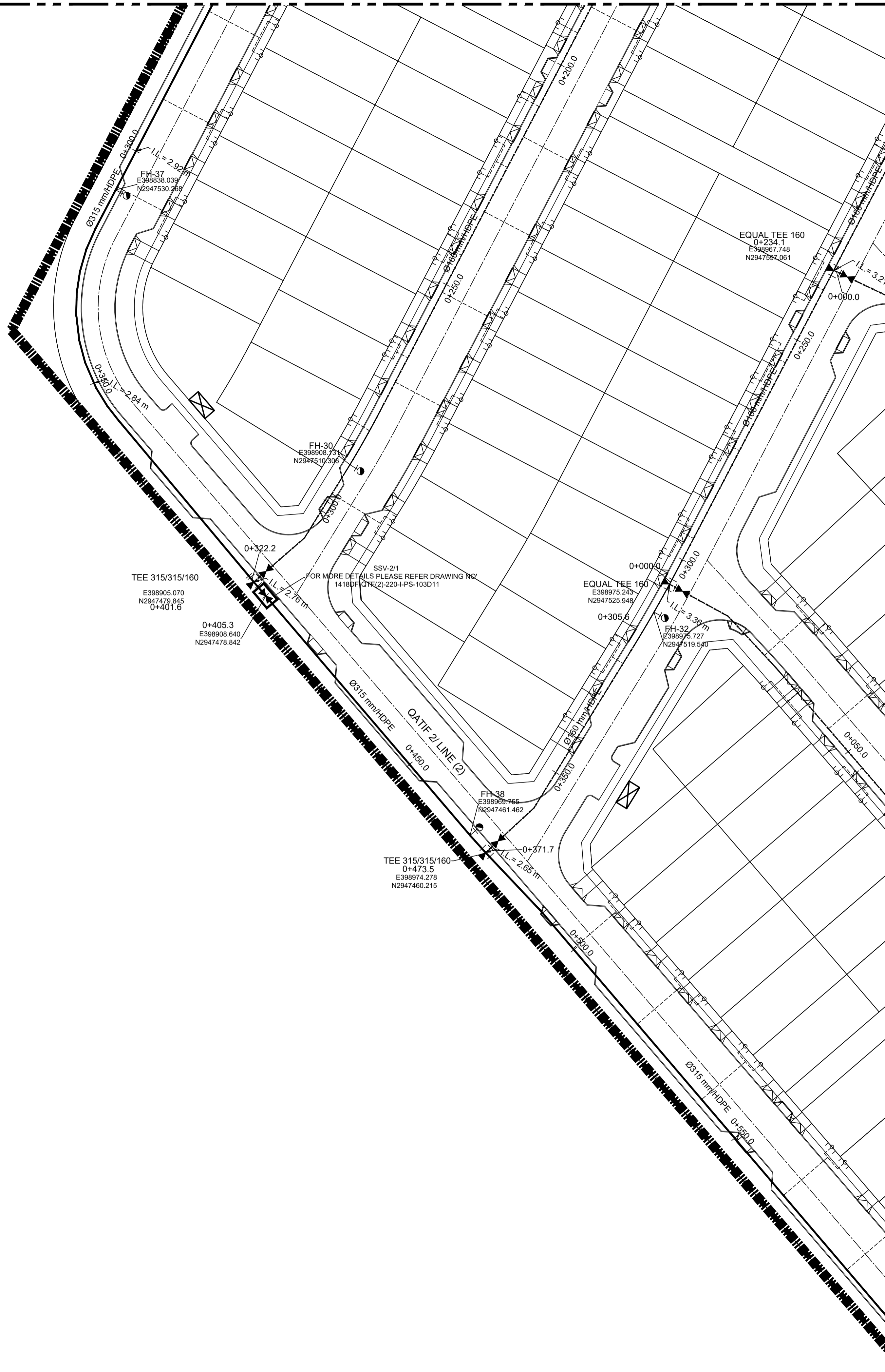
ENGINEERING CONTRACTOR:

DESIGN ITEM: **INFRASTRUCTURE**

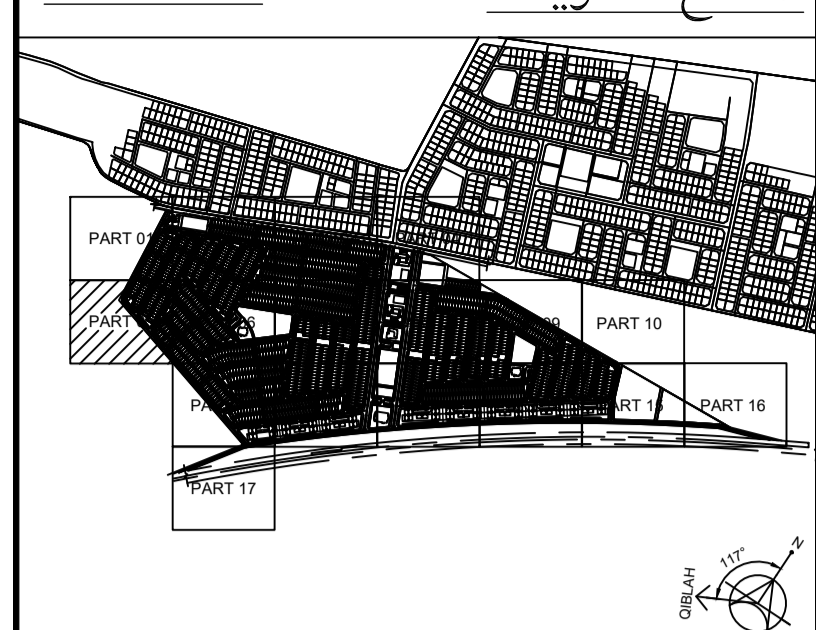
DRAWING TITLE: **QATIF SITE 2 POTABLE WATER AND FIRE FIGHTING NETWORK PART PLAN ( 4 OF 17 )**

DRAWING NO:	1418DF-QTF(2)-220-I-PS-101P4	تاريخ الرسم	15/09/2023	SCALE	AS SHOWN	PHASE	SD
PROJECT NO:	1418DF-QTF(2)-220-I-PS-101P4	تاريخ البدء	15/09/2023	SCALE	AS SHOWN	PHASE	SD
DRAWN BY:		مراجعة		التصميم		الموافق	
CHECKED BY:		مراجعة		التصميم		الموافق	
APPROVED BY:		مراجعة		التصميم		الموافق	





KEY PLAN: مفتاح الخريطة



- NOTES: -
- 1- ALL DIMENSIONS ARE IN MILLIMETER UNLESS OTHERWISE INDICATED.
  - 2- THIS DRAWING TO BE READ IN CONJUNCTION WITH ALL OTHER CONTRACT DRAWINGS AND SPECIFICATIONS.
  - 3- PIPE DIAMETERS ARE SHOWN IN MILLIMETERS FOR NOMINAL DIAMETERS UNLESS OTHERWISE INDICATED.
  - 4- ALL PIPE DIAMETER SHALL BE PN 16 FOR HDPE SDR 11.
  - 5- ALL BUILDING TIE-IN PIPES DIAMETERS AND LOCATIONS SHOULD BE COORDINATED WITH PLUMBING DRAWINGS BEFORE CONSTRUCTION.
  - 6- THE CONTRACTOR SHOULD COORDINATE WITH ALL OTHER PROPOSED, EXISTING UTILITIES, FEATURES, STRUCTURES AND FOUNDATION BEFORE CONSTRUCTION.
  - 7- PIPES SHALL BE LAID SUCH THAT THE MINIMUM SOIL COVER OVER PIPE CROWN IS 1.2 METER, IN CASE OF COVER LESS THAN 1M CONCRETE ENCASEMENT SHOULD BE PROVIDED.
  - 8- ALL BURIED DUCTILE IRON PIPES, FITTING AND VALVES WILL WRAPPED WITH POLYETHYLENE COATING.
  - 9- CONTRACTOR SHALL RETRIEVE AND VERIFY ACCURACY OF ALL RELEVANT EXISTING AS-BUILT DRAWINGS AND DOCUMENTS RELATED TO THE WORK.
  - 10- CONTRACTOR SHALL CARRY OUT AND SHALL BE RESPONSIBLE FOR THE COMPLETE SHOP DRAWINGS INCLUDING UPDATE AND RE-ISSUING THE SUBMITTED DRAWINGS AFTER INCORPORATING ACTUAL SITE DATA.
  - 11- FOR POTABLE WATER DETAILS REFER TO DETAIL DRAWINGS (1418DF-QTF(2)-220-I-PS-103D01 TO 1418DF-QTF(2)-220-I-PS-103D01-D21)
  - 12- THE MENTIONED PIPE QATIF 2/ LINE DIAMETER IS NOMINAL OUTSIDE PIPE DIAMETER FOR HDPE AND NOMINAL INSIDE PIPE DIAMETER FOR DI PIPES.
  - 13- FOR UTILITY CORRIDOR AND CORRIDOR CROSS SECTION REFER TO SHEETS NO. (I-PS-600)
  - 14- HOUSE CONNECTION LOCATIONS ARE INDICATIVE, FOR EXACT LOCATIONS REFER TO THE MOMRA UTILITY ARRANGEMENT STANDARD DETAILS.
  - 15- ALL LEVELS ARE IN METERS AND REFERENCED TO MEAN SEA LEVEL (MSL), UNLESS OTHERWISE INDICATED.
  - 16- FIRE HYDRANTS ARE SPACED TO SERVE AN AREA OF 150 M DIAMETERS FOR RESIDENTIAL PREMISES AND 90M FOR COMMERCIAL PREMISES. FIRE HYDRANTS IN THE POTABLE WATER NETWORK ARE PROPOSED FOR 20 PSI PRESSURE, TO FILL FIRE TRUCKS ONLY, NOT TO DIRECT FIRE FIGHTING.

- LEGEND: -
- 160 PW Ø160mm HDPE
  - 250 PW Ø250mm HDPE
  - 315 PW Ø315mm HDPE
  - 355 PW Ø355mm HDPE
  - 400 PW Ø400mm DI
  - PROJECT BOUNDARY
  - BURIED GATE VALVE
  - REDUCER
  - FIRE HYDRANT
  - WATER FLOW METER CHAMBER
  - Ø32mm SINGLE TIE-IN CONNECTION
  - Ø63mm PUBLIC TIE-IN CONNECTION
  - Ø32mm / Ø50mm DOUBLE TIE-IN CONNECTION
  - AIR VALVE CHAMBER(AVC)
  - DRAIN VALVE CHAMBER(WVC)
  - END CAP WITH CONCRETE BLOCK
  - SINGLE SHUT OFF VALVE CHAMBER(SSV)
  - THREE SHUT OFF VALVE CHAMBER(TSV)
  - HORIZONTAL BEND
  - TEE

00	ISSUE FOR APPROVAL / SHOPDRAWING	10/2023
	مصدر من اجل الموافقة	اليوم
	ISSUED FOR / REVISION	DATE

PROJECT TITLE: **GRANT LANDS PROJECT**

CLIENT:

CONSULTANT:

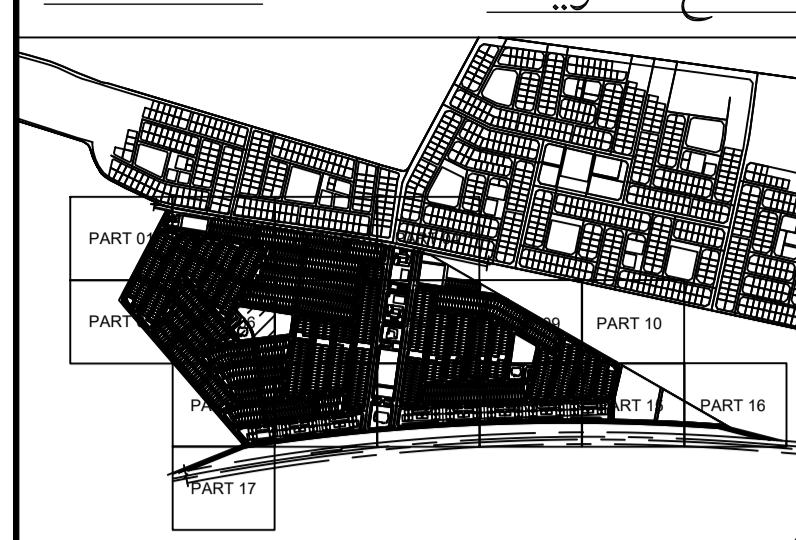
ENGINEERING CONTRACTOR:

DESIGN ITEM: **INFRASTRUCTURE**

DRAWING TITLE: **QATIF SITE 2 POTABLE WATER AND FIRE FIGHTING NETWORK PART PLAN ( 5 OF 17 )**

PROJECT NO:	1418DF	START DATE:	11/2022	SCALE:	1:500	PHASE:	SD
DRAWN BY:		CHECKED BY:		CERTIFIED BY:		APPROVED:	
SIGN:		SIGN:		SIGN:		SIGN:	





- NOTES: -
- 1- ALL DIMENSIONS ARE IN MILLIMETER UNLESS OTHERWISE INDICATED.
  - 2- THIS DRAWING TO BE READ IN CONJUNCTION WITH ALL OTHER CONTRACT DRAWINGS, AND SPECIFICATIONS.
  - 3- PIPE DIAMETERS ARE SHOWN IN MILLIMETERS FOR NOMINAL DIAMETERS UNLESS OTHERWISE INDICATED.
  - 4- ALL PIPE DIAMETER SHALL BE PN 16 FOR HDPE SDR 11.
  - 5- ALL BUILDING TIE-IN PIPES DIAMETERS AND LOCATIONS SHOULD BE COORDINATED WITH PLUMBING DRAWINGS BEFORE CONSTRUCTION.
  - 6- THE CONTRACTOR SHOULD COORDINATE WITH ALL OTHER PROPOSED, EXISTING UTILITIES, FEATURES, STRUCTURES AND FOUNDATION BEFORE CONSTRUCTION.
  - 7- PIPES SHALL BE LAID SUCH THAT THE MINIMUM SOIL COVER OVER PIPE GROWN IS 1.2 METER, IN CASE OF COVER LESS THAN 1M CONCRETE ENCASEMENT SHOULD BE PROVIDED.
  - 8- ALL BURIED DUCTILE IRON PIPES, FITTING AND VALVES WILL WRAPPED WITH POLYETHYLENE COATING.
  - 9- CONTRACTOR SHALL RETRIEVE AND VERIFY ACCURACY OF ALL RELEVANT EXISTING AS-BUILT DRAWINGS AND DOCUMENTS RELATED TO THE WORK.
  - 10- CONTRACTOR SHALL CARRY OUT AND SHALL BE RESPONSIBLE FOR THE COMPLETE SHOP DRAWINGS INCLUDING UPDATE AND RE-ISSUING THE SUBMITTED DRAWINGS AFTER INCORPORATING ACTUAL SITE DATA.
  - 11- FOR POTABLE WATER DETAILS REFER TO DETAIL DRAWINGS (1418DF-QTF(2)-220-I-PS-103D01 TO 1418DF-QTF(2)-220-I-PS-103D01-D21)
  - 12- THE MENTIONED PIPE QATIF 2/ LINE DIAMETER IS NOMINAL OUTSIDE PIPE DIAMETER FOR HDPE AND NOMINAL INSIDE PIPE DIAMETER FOR DI PIPES.
  - 13- FOR UTILITY CORRIDOR AND CORRIDOR CROSS SECTION REFER TO SHEETS NO. (I-PS-600)
  - 14- HOUSE CONNECTION LOCATIONS ARE INDICATIVE, FOR EXACT LOCATIONS REFER TO THE MOMRA UTILITY ARRANGEMENT STANDARD DETAILS.
  - 15- ALL LEVELS ARE IN METERS AND REFERENCED TO MEAN SEA LEVEL (MSL), UNLESS OTHERWISE INDICATED.
  - 16- FIRE HYDRANTS ARE SPACED TO SERVE AN AREA OF 150 M DIAMETERS FOR RESIDENTIAL PREMISES AND 90M FOR COMMERCIAL PREMISES. FIRE HYDRANTS IN THE POTABLE WATER NETWORK ARE PROPOSED FOR 20 PSI PRESSURE, TO FILL FIRE TRUCKS ONLY, NOT TO DIRECT FIRE FIGHTING.

- LEGEND: -
- 160 PW Ø160mm HDPE
  - 250 PW Ø250mm HDPE
  - 315 PW Ø315mm HDPE
  - 355 PW Ø355mm HDPE
  - 400 PW Ø400mm DI
  - PROJECT BOUNDARY
  - BURIED GATE VALVE
  - REDUCER
  - FIRE HYDRANT
  - WATER FLOW METER CHAMBER
  - Ø32mm SINGLE TIE-IN CONNECTION
  - Ø63mm PUBLIC TIE IN CONNECTION
  - Ø32mm Ø50mm DOUBLE TIE-IN CONNECTION
  - AIR VALVE CHAMBER(AVC)
  - DRAIN VALVE CHAMBER(WVC)
  - END CAP WITH CONCRETE BLOCK
  - SINGLE SHUT OFF VALVE CHAMBER(SSV)
  - THREE SHUT OFF VALVE CHAMBER(TSV)
  - HORIZONTAL BEND
  - TEE

00	ISSUE FOR APPROVAL / SHOPDRAWING	10/2023
01	مراجعة من اجل الموافقة	10/2023
02	مراجعة من اجل الموافقة	10/2023
03	مراجعة من اجل الموافقة	10/2023
04	مراجعة من اجل الموافقة	10/2023

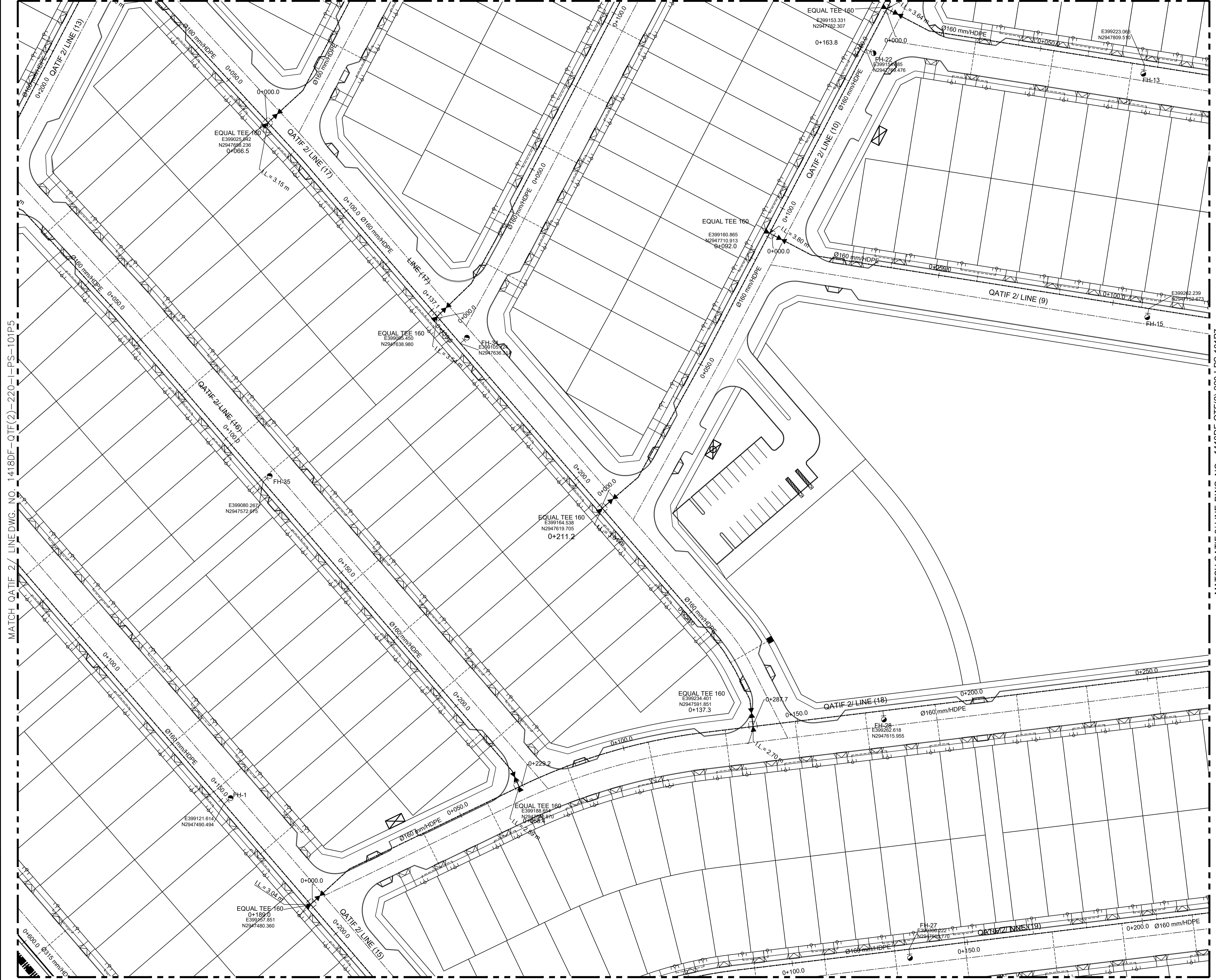
PROJECT TITLE: **GRANT LANDS PROJECT**



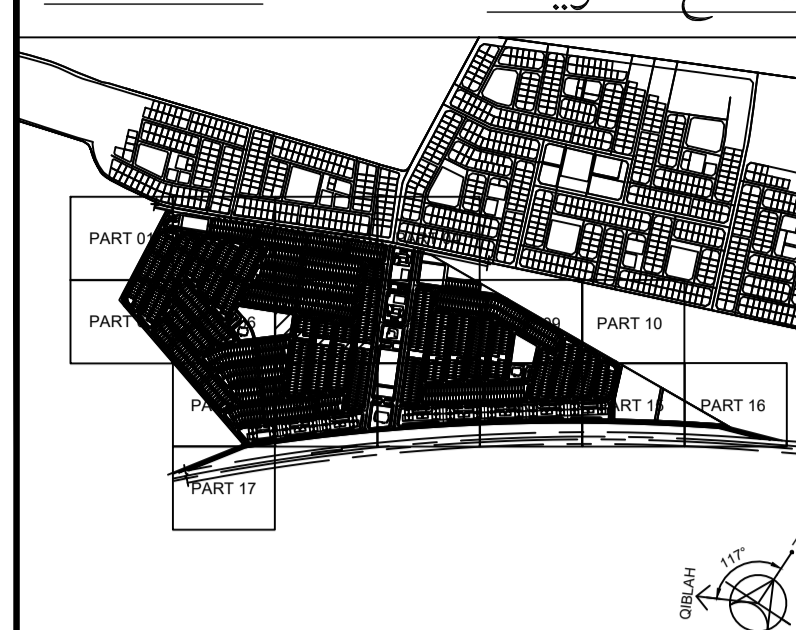
DESIGN ITEM: **INFRASTRUCTURE**

DRAWING TITLE: **QATIF SITE 2 POTABLE WATER AND FIRE FIGHTING NETWORK PART PLAN ( 6 OF 17 )**

DRAWING NO:	1418DF-QTF(2)-220-I-PS-101P6
PROJECT NO:	1418DF
DRAWN BY:	1418DF
CHECKED BY:	1418DF
APPROVED BY:	1418DF
DATE:	10/2023
SCALE:	1:500
PHASE:	SD
ISSUE NO. / REV. NO.:	0 / 0










- NOTES: -
- 1- ALL DIMENSIONS ARE IN MILLIMETER UNLESS OTHERWISE INDICATED.
  - 2- THIS DRAWING TO BE READ IN CONJUNCTION WITH ALL OTHER CONTRACT DRAWINGS, AND SPECIFICATIONS.
  - 3- PIPE DIAMETERS ARE SHOWN IN MILLIMETERS FOR NOMINAL DIAMETERS UNLESS OTHERWISE INDICATED.
  - 4- ALL PIPE DIAMETER SHALL BE PN 16 FOR HDPE SDR 11.
  - 5- ALL BUILDING TIE-IN PIPES DIAMETERS AND LOCATIONS SHOULD BE COORDINATED WITH PLUMBING DRAWINGS BEFORE CONSTRUCTION.
  - 6- THE CONTRACTOR SHOULD COORDINATE WITH ALL OTHER PROPOSED, EXISTING UTILITIES, FEATURES, STRUCTURES AND FOUNDATION BEFORE CONSTRUCTION.
  - 7- PIPES SHALL BE LAID SUCH THAT THE MINIMUM SOIL COVER OVER PIPE CROWN IS 12 METER, IN CASE OF COVER LESS THAN 1M CONCRETE ENCASMENT SHOULD BE PROVIDED.
  - 8- ALL BURIED DUCTILE IRON PIPES, FITTING AND VALVES WILL WRAPPED WITH POLYETHYLENE COATING.
  - 9- CONTRACTOR SHALL RETRIEVE AND VERIFY ACCURACY OF ALL RELEVANT EXISTING AS-BUILT DRAWINGS AND DOCUMENTS RELATED TO THE WORK.
  - 10- CONTRACTOR SHALL CARRY OUT AND SHALL BE RESPONSIBLE FOR THE COMPLETE SHOP DRAWINGS INCLUDING UPDATE AND RE-ISSUING THE SUBMITTED DRAWINGS AFTER INCORPORATING ACTUAL SITE DATA.
  - 11- FOR POTABLE WATER DETAILS REFER TO DETAIL DRAWINGS (1418DF-QTF(2)-220-I-PS-103D01 TO 1418DF-QTF(2)-220-I-PS-103D01-D21)
  - 12- THE MENTIONED PIPE QATIF 2/ LINE DIAMETER IS NOMINAL OUTSIDE PIPE DIAMETER FOR HDPE AND NOMINAL INSIDE PIPE DIAMETER FOR DI PIPES.
  - 13- FOR UTILITY CORRIDOR AND CORRIDOR CROSS SECTION REFER TO SHEETS NO. (I-PS-600)
  - 14- HOUSE CONNECTION LOCATIONS ARE INDICATIVE, FOR EXACT LOCATIONS REFER TO THE MOMRA UTILITY ARRANGEMENT STANDARD DETAILS.
  - 15- ALL LEVELS ARE IN METERS AND REFERENCED TO MEAN SEA LEVEL (MSL), UNLESS OTHERWISE INDICATED.
  - 16- FIRE HYDRANTS ARE SPACED TO SERVE AN AREA OF 150 M DIAMETERS FOR RESIDENTIAL PREMISES AND 90M FOR COMMERCIAL PREMISES. FIRE HYDRANTS IN THE POTABLE WATER NETWORK ARE PROPOSED FOR 20 PSI PRESSURE, TO FILL FIRE TRUCKS ONLY, NOT TO DIRECT FIRE FIGHTING.

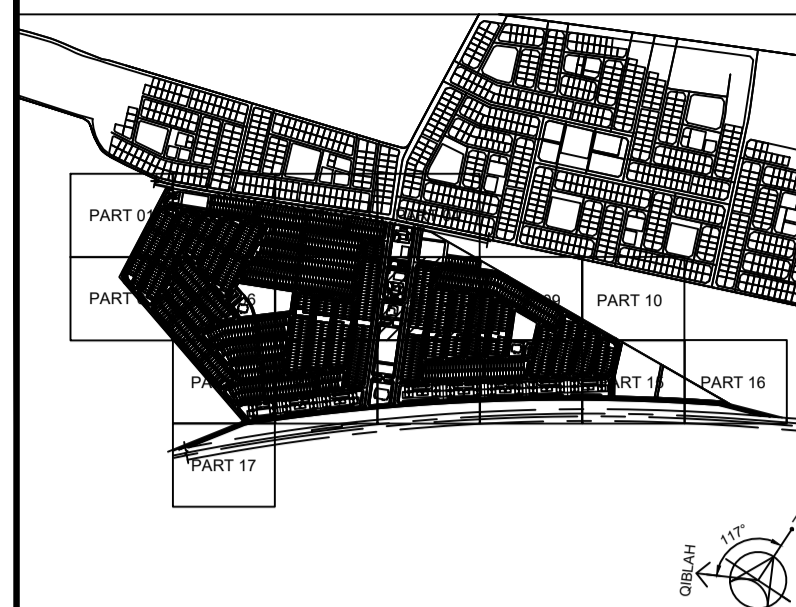
- LEGEND: -
- 160 PW Ø160mm HDPE
  - 250 PW Ø250mm HDPE
  - 315 PW Ø315mm HDPE
  - 355 PW Ø355mm HDPE
  - 400 PW Ø400mm DI
  - PROJECT BOUNDARY
  - BURIED GATE VALVE
  - REDUCER
  - FIRE HYDRANT
  - WATER FLOW METER CHAMBER
  - Ø32mm SINGLE TIE-IN CONNECTION
  - Ø63mm PUBLIC TIE IN CONNECTION
  - Ø32mm Ø50mm DOUBLE TIE-IN CONNECTION
  - AIR VALVE CHAMBER(AVC)
  - DRAIN VALVE CHAMBER(WVC)
  - END CAP WITH CONCRETE BLOCK
  - SINGLE SHUT OFF VALVE CHAMBER(SSV)
  - THREE SHUT OFF VALVE CHAMBER(TSV)
  - HORIZONTAL BEND
  - TEE

00	ISSUE FOR APPROVAL / SHOPDRAWING	10/2023
	مراجعة من أجل الموافقة	التاريخ
	ISSUED FOR REVISION	DATE
	مراجعة	BY
PROJECT TITLE		
GRANT LANDS PROJECT		
CLIENT		
 مؤسسة ميثاقية لقرى ومجتمعات		
CONSULTANT		
 دار الرياض DESIGN & CONSTRUCTION MANAGEMENT SERVICES		
ENGINEERING CONTRACTOR		
 الرواف للمقاولات		
DESIGN ITEM		
INFRASTRUCTURE		
DRAWING TITLE		
QATIF SITE 2 POTABLE WATER AND FIRE FIGHTING NETWORK PART PLAN ( 7 OF 17 )		
DRAWING NO.		
1418DF-QTF(2)-220-I-PS-101P7		
PROJECT NO.	START DATE	SCALE
1418DF-QTF(2)-220-I-PS-101P7	1 OCT 2023	1:500
DRAWN BY	CHECKED BY	APPROVED BY
الاصحاب	المراجعة	التصديق
SIGN:	التوقيع	SIGN:
	التوقيع	

MATCH QATIF 2/ LINE DWG. NO. 1418DF-QTF(2)-220-I-PS-101P6

MATCH QATIF 2/ LINE DWG. NO. 1418DF-QTF(2)-220-I-PS-101P8





- NOTES: -
- 1- ALL DIMENSIONS ARE IN MILLIMETER UNLESS OTHERWISE INDICATED.
  - 2- THIS DRAWING TO BE READ IN CONJUNCTION WITH ALL OTHER CONTRACT DRAWINGS AND SPECIFICATIONS.
  - 3- PIPE DIAMETERS ARE SHOWN IN MILLIMETERS FOR NOMINAL DIAMETERS UNLESS OTHERWISE INDICATED.
  - 4- ALL PIPE DIAMETER SHALL BE PN 16 FOR HDPE SDR 11.
  - 5- ALL BUILDING TIE-IN PIPES DIAMETERS AND LOCATIONS SHOULD BE COORDINATED WITH PLUMBING DRAWINGS BEFORE CONSTRUCTION.
  - 6- THE CONTRACTOR SHOULD COORDINATE WITH ALL OTHER PROPOSED, EXISTING UTILITIES, FEATURES, STRUCTURES AND FOUNDATION BEFORE CONSTRUCTION.
  - 7- PIPES SHALL BE LAID SUCH THAT THE MINIMUM SOIL COVER OVER PIPE CROWN IS 1.2 METER, IN CASE OF COVER LESS THAN 1M CONCRETE ENCASMENT SHOULD BE PROVIDED.
  - 8- ALL BURIED DUCTILE IRON PIPES, FITTING AND VALVES WILL WRAPPED WITH POLYETHYLENE COATING.
  - 9- CONTRACTOR SHALL RETRIEVE AND VERIFY ACCURACY OF ALL RELEVANT EXISTING AS-BUILT DRAWINGS AND DOCUMENTS RELATED TO THE WORK.
  - 10- CONTRACTOR SHALL CARRY OUT AND SHALL BE RESPONSIBLE FOR THE COMPLETE SHOP DRAWINGS INCLUDING UPDATE AND RE-ISSUING THE SUBMITTED DRAWINGS AFTER INCORPORATING ACTUAL SITE DATA.
  - 11- FOR POTABLE WATER DETAILS REFER TO DETAIL DRAWINGS (1418DF-QTF(2)-220-I-PS-103D01 TO 1418DF-QTF(2)-220-I-PS-103D01-D21)
  - 12- THE MENTIONED PIPE QATIF 2/ LINE DIAMETER IS NOMINAL OUTSIDE PIPE DIAMETER FOR HDPE AND NOMINAL INSIDE PIPE DIAMETER FOR DI PIPES.
  - 13- FOR UTILITY CORRIDOR AND CORRIDOR CROSS SECTION REFER TO SHEETS NO. (I-PS-600)
  - 14- HOUSE CONNECTION LOCATIONS ARE INDICATIVE, FOR EXACT LOCATIONS REFER TO THE MOMRA UTILITY ARRANGEMENT STANDARD DETAILS.
  - 15- ALL LEVELS ARE IN METERS AND REFERENCED TO MEAN SEA LEVEL (MSL), UNLESS OTHERWISE INDICATED.
  - 16- FIRE HYDRANTS ARE SPACED TO SERVE AN AREA OF 150 M DIAMETERS FOR RESIDENTIAL PREMISES AND 90M FOR COMMERCIAL PREMISES. FIRE HYDRANTS IN THE POTABLE WATER NETWORK ARE PROPOSED FOR 20 PSI PRESSURE, TO FILL FIRE TRUCKS ONLY, NOT TO DIRECT FIRE FIGHTING.

- LEGEND: -
- 160 PW Ø160mm HDPE
  - 250 PW Ø250mm HDPE
  - 315 PW Ø315mm HDPE
  - 355 PW Ø355mm HDPE
  - 400 PW Ø400mm DI
  - PROJECT BOUNDARY
  - BURIED GATE VALVE
  - REDUCER
  - FIRE HYDRANT
  - WATER FLOW METER CHAMBER
  - Ø32mm SINGLE TIE-IN CONNECTION
  - Ø63mm PUBLIC TIE IN CONNECTION
  - Ø32mm Ø50mm DOUBLE TIE-IN CONNECTION
  - AIR VALVE CHAMBER(AVC)
  - DRAIN VALVE CHAMBER(WC)
  - END CAP WITH CONCRETE BLOCK
  - SINGLE SHUT OFF VALVE CHAMBER(SSV)
  - THREE SHUT OFF VALVE CHAMBER(TSV)
  - HORIZONTAL BEND
  - TEE

00	ISSUE FOR APPROVAL / SHOPDRAWING	10/2023
	مراجعة من اجل الموافقة	التاريخ
	ISSUED FOR REVISION	DATE
	مراجعة من قبل	BY

PROJECT TITLE: **GRANT LANDS PROJECT**

CLIENT: **مكة المشروع**



DESIGN ITEM: **INFRASTRUCTURE**

DRAWING TITLE: **QATIF SITE 2 POTABLE WATER AND FIRE FIGHTING NETWORK PART PLAN ( 8 OF 17 )**

DRAWING NO: **1418DF-QTF(2)-220-I-PS-101P8**

PROJECT NO	1418DF	START DATE	15 OCT 2023	SCALE	1:500	PHASE	SD
DRAWN BY		CHECKED BY		DESIGNED BY		CERTIFIED BY	

SIGN:	التوقيع	SIGN:	التوقيع	SIGN:	التوقيع	SIGN:	التوقيع
-------	---------	-------	---------	-------	---------	-------	---------



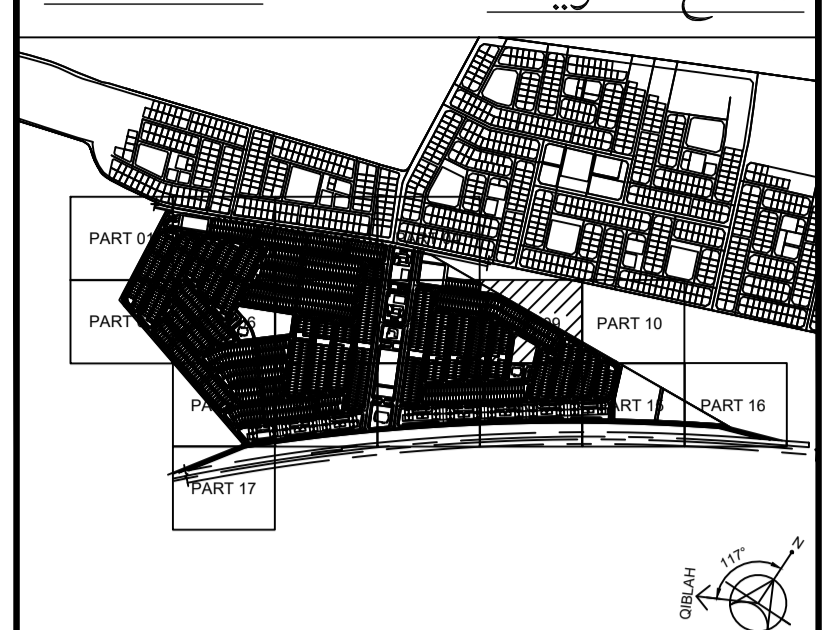


MATCH QATIF 2/ LINE DWG. NO. 1418DF-QTF(2)-220-I-PS-101P8



MATCH QATIF 2/ LINE DWG. NO. 1418DF-QTF(2)-220-I-PS-101P14

KEY PLAN: مفتاح الخريطة



- NOTES: -
- 1- ALL DIMENSIONS ARE IN MILLIMETER UNLESS OTHERWISE INDICATED.
  - 2- THIS DRAWING TO BE READ IN CONJUNCTION WITH ALL OTHER CONTRACT DRAWINGS, AND SPECIFICATIONS.
  - 3- PIPE DIAMETERS ARE SHOWN IN MILLIMETERS FOR NOMINAL DIAMETERS UNLESS OTHERWISE INDICATED.
  - 4- ALL PIPE DIAMETER SHALL BE PN 16 FOR HDPE SDR 11.
  - 5- ALL BUILDING TIE-IN PIPES DIAMETERS AND LOCATIONS SHOULD BE COORDINATED WITH PLUMBING DRAWINGS BEFORE CONSTRUCTION.
  - 6- THE CONTRACTOR SHOULD COORDINATE WITH ALL OTHER PROPOSED, EXISTING UTILITIES, FEATURES, STRUCTURES AND FOUNDATION BEFORE CONSTRUCTION.
  - 7- PIPES SHALL BE LAID SUCH THAT THE MINIMUM SOIL COVER OVER PIPE CROWN IS 1.2 METER, IN CASE OF COVER LESS THAN 1M CONCRETE ENCASMENT SHOULD BE PROVIDED.
  - 8- ALL BURIED DUCTILE IRON PIPES, FITTING AND VALVES WILL WRAPPED WITH POLYETHYLENE COATING.
  - 9- CONTRACTOR SHALL RETRIEVE AND VERIFY ACCURACY OF ALL RELEVANT EXISTING AS-BUILT DRAWINGS AND DOCUMENTS RELATED TO THE WORK.
  - 10- CONTRACTOR SHALL CARRY OUT AND SHALL BE RESPONSIBLE FOR THE COMPLETE SHOP DRAWINGS INCLUDING UPDATE AND RE-ISSUING THE SUBMITTED DRAWINGS AFTER INCORPORATING ACTUAL SITE DATA.
  - 11- FOR POTABLE WATER DETAILS REFER TO DETAIL DRAWINGS (1418DF-QTF(2)-220-I-PS-103D01 TO 1418DF-QTF(2)-220-I-PS-103D01-D21)
  - 12- THE MENTIONED PIPE QATIF 2/ LINE DIAMETER IS NOMINAL OUTSIDE PIPE DIAMETER FOR HDPE AND NOMINAL INSIDE PIPE DIAMETER FOR DI PIPES.
  - 13- FOR UTILITY CORRIDOR AND CORRIDOR CROSS SECTION REFER TO SHEETS NO. (I-PS-600)
  - 14- HOUSE CONNECTION LOCATIONS ARE INDICATIVE, FOR EXACT LOCATIONS REFER TO THE MOMRA UTILITY ARRANGEMENT STANDARD DETAILS.
  - 15- ALL LEVELS ARE IN METERS AND REFERENCED TO MEAN SEA LEVEL (MSL), UNLESS OTHERWISE INDICATED.
  - 16- FIRE HYDRANTS ARE SPACED TO SERVE AN AREA OF 150 M DIAMETERS FOR RESIDENTIAL PREMISES AND 90M FOR COMMERCIAL PREMISES. FIRE HYDRANTS IN THE POTABLE WATER NETWORK ARE PROPOSED FOR 20 PSI PRESSURE, TO FILL FIRE TRUCKS ONLY, NOT TO DIRECT FIRE FIGHTING.

- LEGEND: -
- 160 PW Ø160mm HDPE
  - 250 PW Ø250mm HDPE
  - 315 PW Ø315mm HDPE
  - 355 PW Ø355mm HDPE
  - 400 PW Ø400mm DI
  - PROJECT BOUNDARY
  - BURIED GATE VALVE
  - REDUCER
  - FIRE HYDRANT
  - WATER FLOW METER CHAMBER
  - SINGLE TIE-IN CONNECTION
  - PUBLIC TIE-IN CONNECTION
  - DOUBLE TIE-IN CONNECTION
  - AIR VALVE CHAMBER(AVC)
  - DRAIN VALVE CHAMBER(WVC)
  - END CAP WITH CONCRETE BLOCK
  - SINGLE SHUT OFF VALVE CHAMBER(SSV)
  - THREE SHUT OFF VALVE CHAMBER(TSV)
  - HORIZONTAL BEND
  - TEE

00	ISSUE FOR APPROVAL / SHOPDRAWING	10/2023
	مصدره من اجل الموافقة	العدد
	ISSUED FOR / REVISION	DATE

PROJECT TITLE: **GRANT LANDS PROJECT**

CLIENT: **مكة المشروع**



CONSULTANT: **دار الرياض**  
**DAR AL RIYADH**  
 DESIGN & CONSTRUCTION MANAGEMENT SERVICES

ENGINEERING CONTRACTOR: **الرواف للمقاولات**

DESIGN ITEM: **INFRASTRUCTURE**

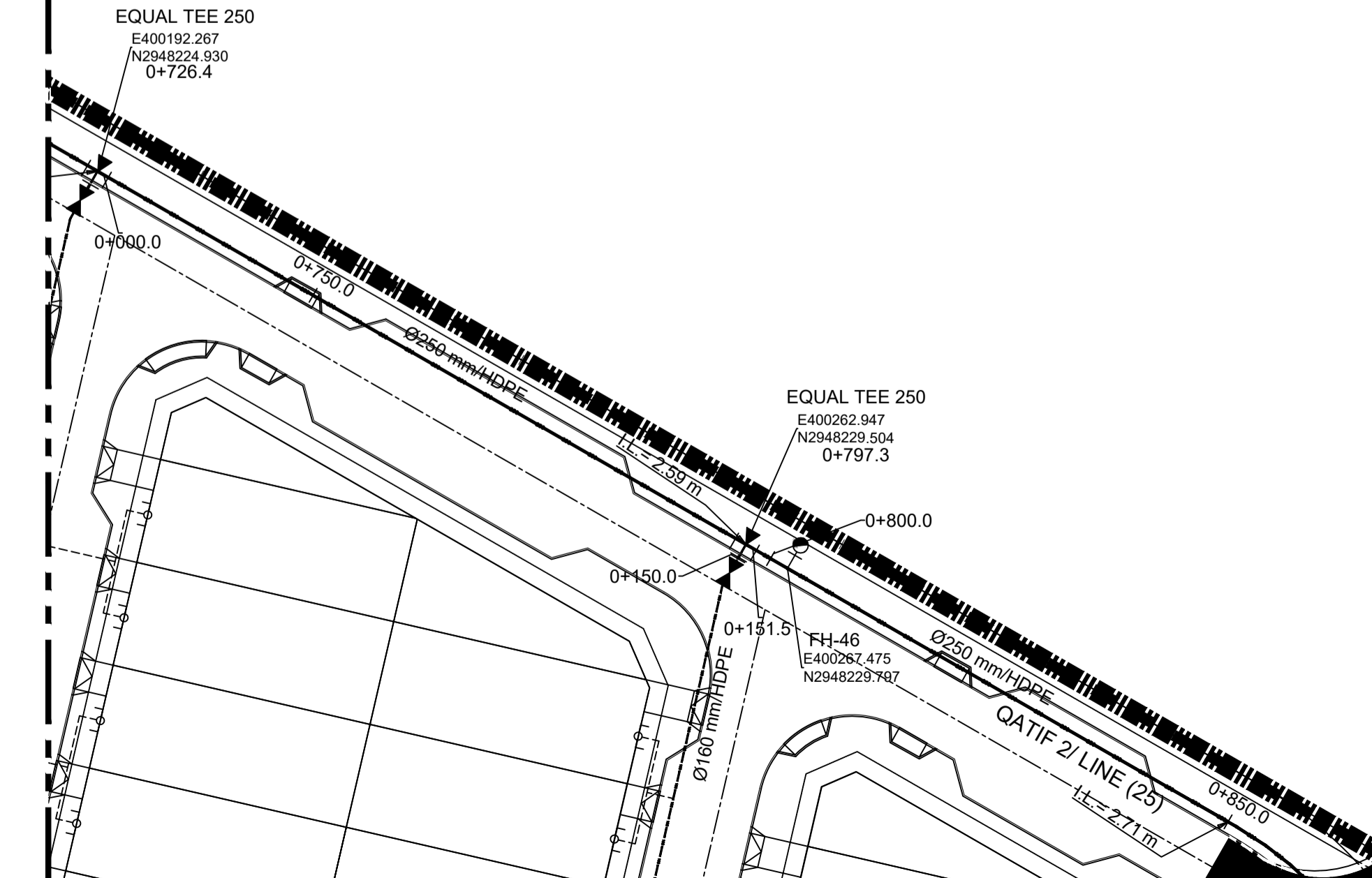
DRAWING TITLE: **QATIF SITE 2 POTABLE WATER AND FIRE FIGHTING NETWORK PART PLAN ( 9 OF 17 )**

DRAWING NO:	1418DF-QTF(2)-220-I-PS-101P9	تاريخ الرسم	14 OCT 2023	SCALE	1:500	PHASE	SD
PROJECT NO:	1418DF	مصدره من قبل	14 OCT 2023	SCALE	1:500	PHASE	SD
DRAWN BY:		CHECKED BY:		CERTIFIED BY:		APPROVED	

SIGN: [Signatures]

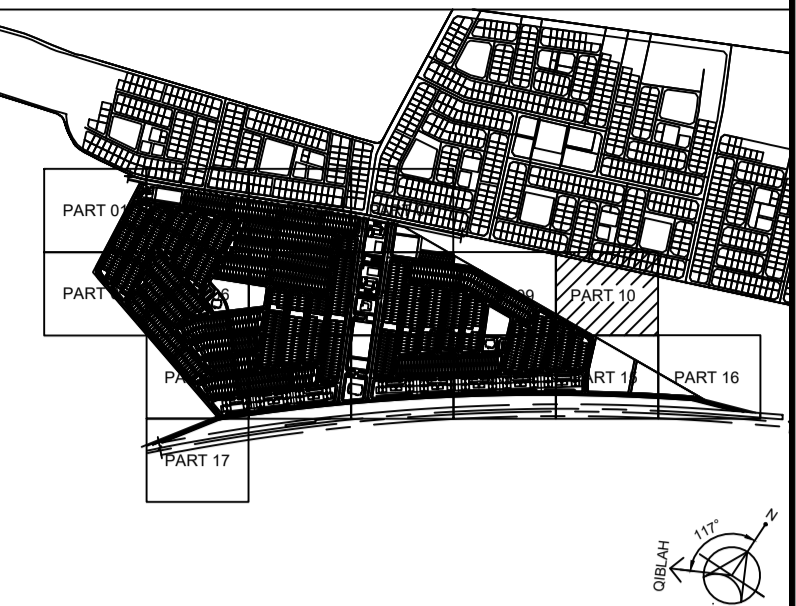


MATCH QATIF 2/ LINE DWG. NO. 1418DF-QTF(2)-220-I-PS-101P9



MATCH QATIF 2/ LINE DWG. NO. 1418DF-QTF(2)-220-I-PS-101P15

KEY PLAN: مفتاح الخريطة



- NOTES: -
- 1- ALL DIMENSIONS ARE IN MILLIMETER UNLESS OTHERWISE INDICATED.
  - 2- THIS DRAWING TO BE READ IN CONJUNCTION WITH ALL OTHER CONTRACT DRAWINGS AND SPECIFICATIONS.
  - 3- PIPE DIAMETERS ARE SHOWN IN MILLIMETERS FOR NOMINAL DIAMETERS UNLESS OTHERWISE INDICATED.
  - 4- ALL PIPE DIAMETER SHALL BE PN 16 FOR HDPE SDR 11.
  - 5- ALL BUILDING TIE-IN PIPES DIAMETERS AND LOCATIONS SHOULD BE COORDINATED WITH PLUMBING DRAWINGS BEFORE CONSTRUCTION.
  - 6- THE CONTRACTOR SHOULD COORDINATE WITH ALL OTHER PROPOSED, EXISTING UTILITIES, FEATURES, STRUCTURES AND FOUNDATION BEFORE CONSTRUCTION.
  - 7- PIPES SHALL BE LAID SUCH THAT THE MINIMUM SOIL COVER OVER PIPE CROWN IS 1.2 METER, IN CASE OF COVER LESS THAN 1M CONCRETE ENCASMENT SHOULD BE PROVIDED.
  - 8- ALL BURIED DUCTILE IRON PIPES, FITTING AND VALVES WILL WRAPPED WITH POLYETHYLENE COATING.
  - 9- CONTRACTOR SHALL RETRIEVE AND VERIFY ACCURACY OF ALL RELEVANT EXISTING AS-BUILT DRAWINGS AND DOCUMENTS RELATED TO THE WORK.
  - 10- CONTRACTOR SHALL CARRY OUT AND SHALL BE RESPONSIBLE FOR THE COMPLETE SHOP DRAWINGS INCLUDING UPDATE AND RE-ISSUING THE SUBMITTED DRAWINGS AFTER INCORPORATING ACTUAL SITE DATA.
  - 11- FOR POTABLE WATER DETAILS REFER TO DETAIL DRAWINGS (1418DF-QTF(2)-220-I-PS-103D01 TO 1418DF-QTF(2)-220-I-PS-103D01-D21)
  - 12- THE MENTIONED PIPE QATIF 2/ LINE DIAMETER IS NOMINAL OUTSIDE PIPE DIAMETER FOR HDPE AND NOMINAL INSIDE PIPE DIAMETER FOR DI PIPES.
  - 13- FOR UTILITY CORRIDOR AND CORRIDOR CROSS SECTION REFER TO SHEETS NO. (I-PS-600)
  - 14- HOUSE CONNECTION LOCATIONS ARE INDICATIVE, FOR EXACT LOCATIONS REFER TO THE MOMRA UTILITY ARRANGEMENT STANDARD DETAILS.
  - 15- ALL LEVELS ARE IN METERS AND REFERENCED TO MEAN SEA LEVEL (MSL), UNLESS OTHERWISE INDICATED.
  - 16- FIRE HYDRANTS ARE SPACED TO SERVE AN AREA OF 150 M DIAMETERS FOR RESIDENTIAL PREMISES AND 90M FOR COMMERCIAL PREMISES. FIRE HYDRANTS IN THE POTABLE WATER NETWORK ARE PROPOSED FOR 20 PSI PRESSURE, TO FILL FIRE TRUCKS ONLY, NOT TO DIRECT FIRE FIGHTING.

- LEGEND: -
- 160 PW Ø160mm HDPE
  - 250 PW Ø250mm HDPE
  - 315 PW Ø315mm HDPE
  - 355 PW Ø355mm HDPE
  - PW Ø400mm DI
  - PROJECT BOUNDARY
  - BURIED GATE VALVE
  - REDUCER
  - FIRE HYDRANT
  - WATER FLOW METER CHAMBER
  - Ø32mm SINGLE TIE-IN CONNECTION
  - Ø63mm PUBLIC TIE-IN CONNECTION
  - Ø32mm / Ø50mm DOUBLE TIE-IN CONNECTION
  - AIR VALVE CHAMBER(AVC)
  - DRAIN VALVE CHAMBER(WVC)
  - END CAP WITH CONCRETE BLOCK
  - SINGLE SHUT OFF VALVE CHAMBER(SSV)
  - THREE SHUT OFF VALVE CHAMBER(TSV)
  - HORIZONTAL BEND
  - TEE

00	ISSUE FOR APPROVAL / SHOPDRAWING	10/2023
	صادرة من اجل الموافقة	اليوم
	ISSUED FOR REVISION	DATE

PROJECT TITLE: **GRANT LANDS PROJECT**

CLIENT: **بنك البحرين**



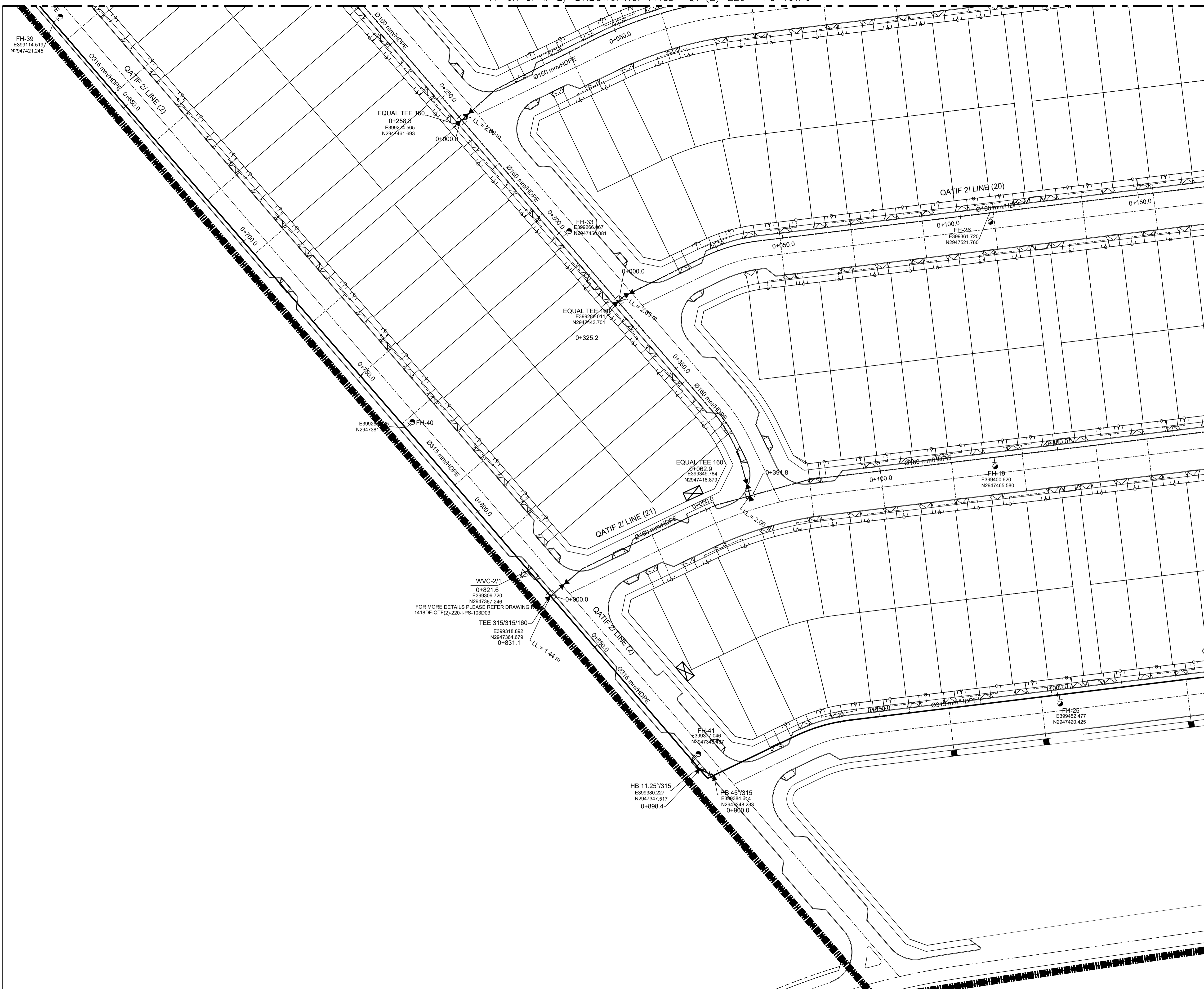
ENGINEERING CONTRACTOR: **الرواف للمقاولات**

DESIGN ITEM: **INFRASTRUCTURE**

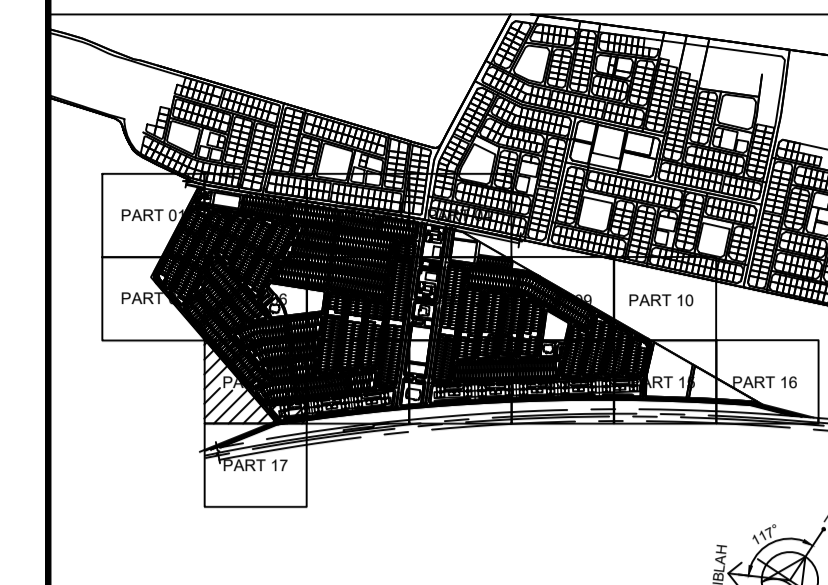
DRAWING TITLE: **QATIF SITE 2 POTABLE WATER AND FIRE FIGHTING NETWORK PART PLAN ( 10 OF 17 )**

DRAWING NO:	1418DF-QTF(2)-220-I-PS-101P10	تاريخ النسخة	0
PROJECT NO:	1418DF	تاريخ البدء	11/5/2023
DRAWN BY:	SD	مراجعة	SD
CHECKED BY:		مراجعة	
APPROVED BY:		مراجعة	
SCALE:	1:500	مراجعة	
PHASE:	SD	مراجعة	
REVISION:	0	مراجعة	





KEY PLAN: مفتاح الخريطة



- NOTES: -
- 1- ALL DIMENSIONS ARE IN MILLIMETER UNLESS OTHERWISE INDICATED.
  - 2- THIS DRAWING TO BE READ IN CONJUNCTION WITH ALL OTHER CONTRACT DRAWINGS AND SPECIFICATIONS.
  - 3- PIPE DIAMETERS ARE SHOWN IN MILLIMETERS FOR NOMINAL DIAMETERS UNLESS OTHERWISE INDICATED.
  - 4- ALL PIPE DIAMETER SHALL BE PN 16 FOR HDPE SDR 11.
  - 5- ALL BUILDINGS TIE-IN PIPES DIAMETERS AND LOCATIONS SHOULD BE COORDINATED WITH PLUMBING DRAWINGS BEFORE CONSTRUCTION.
  - 6- THE CONTRACTOR SHOULD COORDINATE WITH ALL OTHER PROPOSED, EXISTING UTILITIES, FEATURES, STRUCTURES AND FOUNDATION BEFORE CONSTRUCTION.
  - 7- PIPES SHALL BE LAID SUCH THAT THE MINIMUM SOIL COVER OVER PIPE CROWN IS 1.2 METER, IN CASE OF COVER LESS THAN 1M CONCRETE ENGAGEMENT SHOULD BE PROVIDED.
  - 8- ALL BURIED DUCTILE IRON PIPES, FITTING AND VALVES WILL WRAPPED WITH POLYETHYLENE COATING.
  - 9- CONTRACTOR SHALL RETRIEVE AND VERIFY ACCURACY OF ALL RELEVANT EXISTING AS-BUILT DRAWINGS AND DOCUMENTS RELATED TO THE WORK.
  - 10- CONTRACTOR SHALL CARRY OUT AND SHALL BE RESPONSIBLE FOR THE COMPLETE SHOP DRAWINGS INCLUDING UPDATE AND RE-ISSUING THE SUBMITTED DRAWINGS AFTER INCORPORATING ACTUAL SITE DATA.
  - 11- FOR POTABLE WATER DETAILS REFER TO DETAIL DRAWINGS (1418DF-QTF(2)-220-I-PS-103D01 TO 1418DF-QTF(2)-220-I-PS-103D01-D21)
  - 12- THE MENTIONED PIPE QATIF 2/ LINE DIAMETER IS NOMINAL OUTSIDE PIPE DIAMETER FOR HDPE AND NOMINAL INSIDE PIPE DIAMETER FOR DI PIPES.
  - 13- FOR UTILITY CORRIDOR AND CORRIDOR CROSS SECTION REFER TO SHEETS NO. (I-PS-600)
  - 14- HOUSE CONNECTION LOCATIONS ARE INDICATIVE, FOR EXACT LOCATIONS REFER TO THE MOMRA UTILITY ARRANGEMENT STANDARD DETAILS.
  - 15- ALL LEVELS ARE IN METERS AND REFERENCED TO MEAN SEA LEVEL (MSL), UNLESS OTHERWISE INDICATED.
  - 16- FIRE HYDRANTS ARE SPACED TO SERVE AN AREA OF 150 M DIAMETERS FOR RESIDENTIAL PREMISES AND 90M FOR COMMERCIAL PREMISES. FIRE HYDRANTS IN THE POTABLE WATER NETWORK ARE PROPOSED FOR 20 PSI PRESSURE, TO FILL FIRE TRUCKS ONLY, NOT TO DIRECT FIRE FIGHTING.

- LEGEND: -
- 160 PW Ø160mm HDPE
  - 250 PW Ø250mm HDPE
  - 315 PW Ø315mm HDPE
  - 355 PW Ø355mm HDPE
  - 400 PW Ø400mm DI
  - PROJECT BOUNDARY
  - BURIED GATE VALVE
  - REDUCER
  - FIRE HYDRANT
  - WATER FLOW METER CHAMBER
  - Ø32mm SINGLE TIE-IN CONNECTION
  - Ø63mm PUBLIC TIE-IN CONNECTION
  - Ø32mm / Ø50mm DOUBLE TIE-IN CONNECTION
  - AIR VALVE CHAMBER(AVC)
  - DRAIN VALVE CHAMBER(WVC)
  - END CAP WITH CONCRETE BLOCK
  - SINGLE SHUT OFF VALVE CHAMBER(SSV)
  - THREE SHUT OFF VALVE CHAMBER(TSV)
  - HORIZONTAL BEND
  - TEE

00	ISSUE FOR APPROVAL / SHOPDRAWING	10/2023
	مصدره من اجل الموافقة	اليوم
	ISSUED FOR / REVISION	DATE

PROJECT TITLE: **GRANT LANDS PROJECT**

CLIENT:

CONSULTANT:

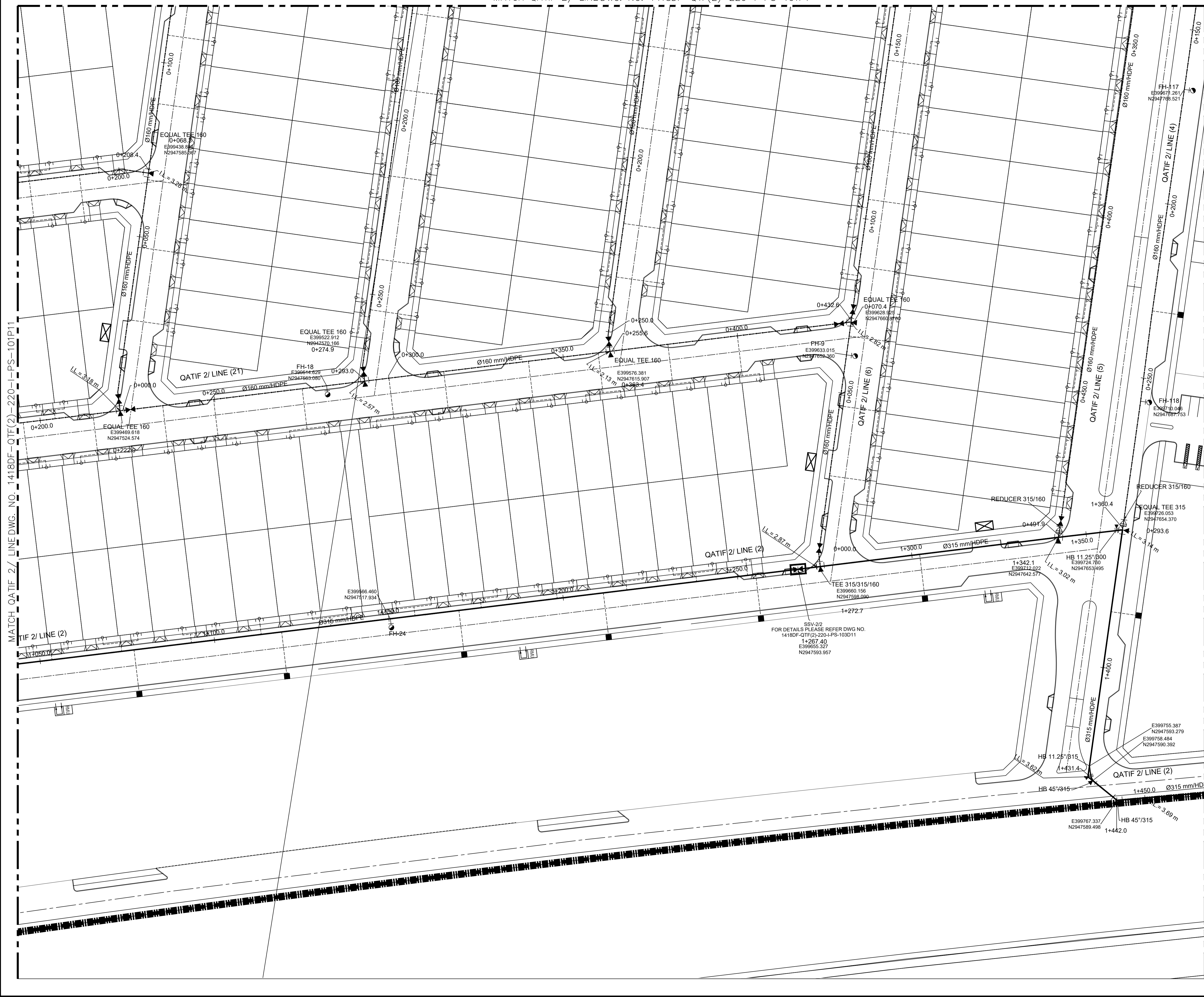
ENGINEERING CONTRACTOR:

DESIGN ITEM: **INFRASTRUCTURE**

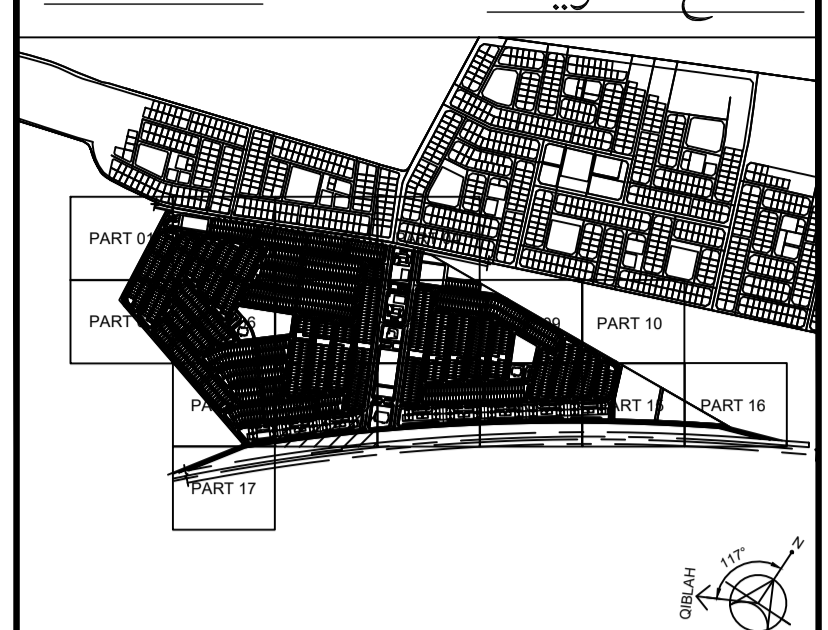
DRAWING TITLE: **QATIF SITE 2 POTABLE WATER AND FIRE FIGHTING NETWORK PART PLAN ( 11 OF 17 )**

DRAWING NO:	1418DF-QTF(2)-220-I-PS-101P11
PROJECT NO:	1418DF
DRAWN BY:	
CHECKED BY:	
DESIGNED BY:	
APPROVED BY:	





KEY PLAN: مفتاح الخريطة



- NOTES: -
- 1- ALL DIMENSIONS ARE IN MILLIMETER UNLESS OTHERWISE INDICATED.
  - 2- THIS DRAWING TO BE READ IN CONJUNCTION WITH ALL OTHER CONTRACT DRAWINGS AND SPECIFICATIONS.
  - 3- PIPE DIAMETERS ARE SHOWN IN MILLIMETERS FOR NOMINAL DIAMETERS UNLESS OTHERWISE INDICATED.
  - 4- ALL PIPE DIAMETER SHALL BE PN 16 FOR HDPE SDR 11.
  - 5- ALL BUILDING TIE-IN PIPES DIAMETERS AND LOCATIONS SHOULD BE COORDINATED WITH PLUMBING DRAWINGS BEFORE CONSTRUCTION.
  - 6- THE CONTRACTOR SHOULD COORDINATE WITH ALL OTHER PROPOSED, EXISTING UTILITIES, FEATURES, STRUCTURES AND FOUNDATION BEFORE CONSTRUCTION.
  - 7- PIPES SHALL BE LAID SUCH THAT THE MINIMUM SOIL COVER OVER PIPE CROWN IS 1.2 METER, IN CASE OF COVER LESS THAN 1M CONCRETE ENCASMENT SHOULD BE PROVIDED.
  - 8- ALL BURIED DUCTILE IRON PIPES, FITTING AND VALVES WILL WRAPPED WITH POLYETHYLENE COATING.
  - 9- CONTRACTOR SHALL RETRIEVE AND VERIFY ACCURACY OF ALL RELEVANT EXISTING AS-BUILT DRAWINGS AND DOCUMENTS RELATED TO THE WORK.
  - 10- CONTRACTOR SHALL CARRY OUT AND SHALL BE RESPONSIBLE FOR THE COMPLETE SHOP DRAWINGS INCLUDING UPDATE AND RE-ISSUING THE SUBMITTED DRAWINGS AFTER INCORPORATING ACTUAL SITE DATA.
  - 11- FOR POTABLE WATER DETAILS REFER TO DETAIL DRAWINGS (1418DF-QTF(2)-220-I-PS-103D01 TO 1418DF-QTF(2)-220-I-PS-103D01-D21)
  - 12- THE MENTIONED PIPE QATIF 2/ LINE DIAMETER IS NOMINAL OUTSIDE PIPE DIAMETER FOR HDPE AND NOMINAL INSIDE PIPE DIAMETER FOR DI PIPES.
  - 13- FOR UTILITY CORRIDOR AND CORRIDOR CROSS SECTION REFER TO SHEETS NO. (I-PS-600)
  - 14- HOUSE CONNECTION LOCATIONS ARE INDICATIVE, FOR EXACT LOCATIONS REFER TO THE MOMRA UTILITY ARRANGEMENT STANDARD DETAILS.
  - 15- ALL LEVELS ARE IN METERS AND REFERENCED TO MEAN SEA LEVEL (MSL), UNLESS OTHERWISE INDICATED.
  - 16- FIRE HYDRANTS ARE SPACED TO SERVE AN AREA OF 150 M DIAMETERS FOR RESIDENTIAL PREMISES AND 90M FOR COMMERCIAL PREMISES. FIRE HYDRANTS IN THE POTABLE WATER NETWORK ARE PROPOSED FOR 20 PSI PRESSURE, TO FILL FIRE TRUCKS ONLY, NOT TO DIRECT FIRE FIGHTING.

- LEGEND: -
- 160 PW Ø160mm HDPE
  - 250 PW Ø250mm HDPE
  - 315 PW Ø315mm HDPE
  - 355 PW Ø355mm HDPE
  - 400 PW Ø400mm DI
  - PROJECT BOUNDARY
  - BURIED GATE VALVE
  - REDUCER
  - FIRE HYDRANT
  - WATER FLOW METER CHAMBER
  - SINGLE TIE-IN CONNECTION
  - PUBLIC TIE-IN CONNECTION
  - DOUBLE TIE-IN CONNECTION
  - AIR VALVE CHAMBER(AVC)
  - DRAIN VALVE CHAMBER(WC)
  - END CAP WITH CONCRETE BLOCK
  - SINGLE SHUT OFF VALVE CHAMBER(SSV)
  - THREE SHUT OFF VALVE CHAMBER(TSV)
  - HORIZONTAL BEND
  - TEE

00	ISSUE FOR APPROVAL / SHOPDRAWING	10/2023
	مراجعة من اجل الموافقة	تاريخ
	ISSUED FOR REVISION	DATE
	مراجعة من قبل	تاريخ

**GRANT LANDS PROJECT**

CLIENT:

CONSULTANT:

ENGINEERING CONTRACTOR:

DESIGN ITEM: **INFRASTRUCTURE**

DRAWING TITLE: **QATIF SITE 2 POTABLE WATER AND FIRE FIGHTING NETWORK PART PLAN ( 12 OF 17 )**

DRAWING NO: 1418DF-QTF(2)-220-I-PS-101P12

PROJECT NO: 1418DF

START DATE: OCT. 2023

SCALE: 1:500

PHASE: SD

REVISION: 0

DRAWN BY: [Signature]

CHECKED BY: [Signature]

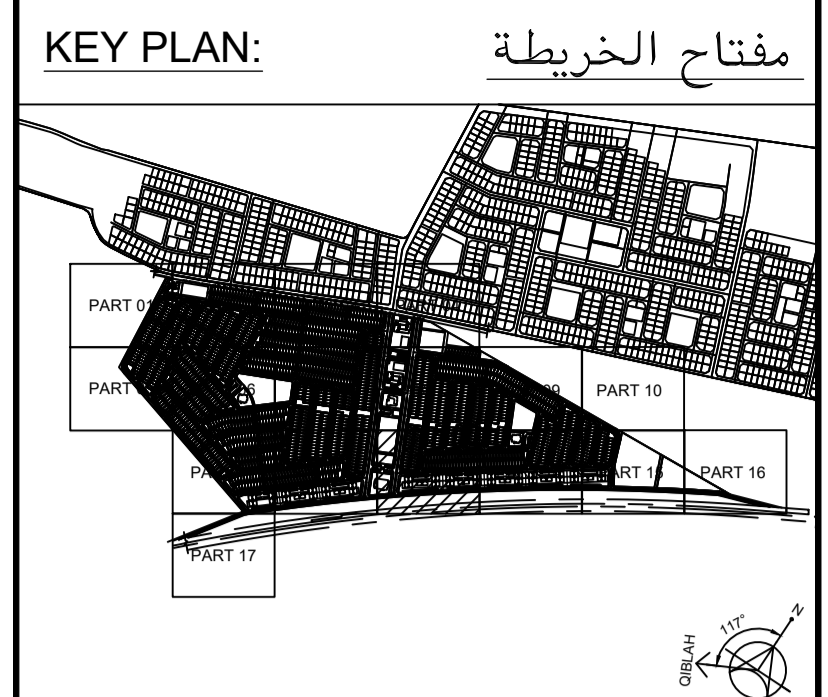
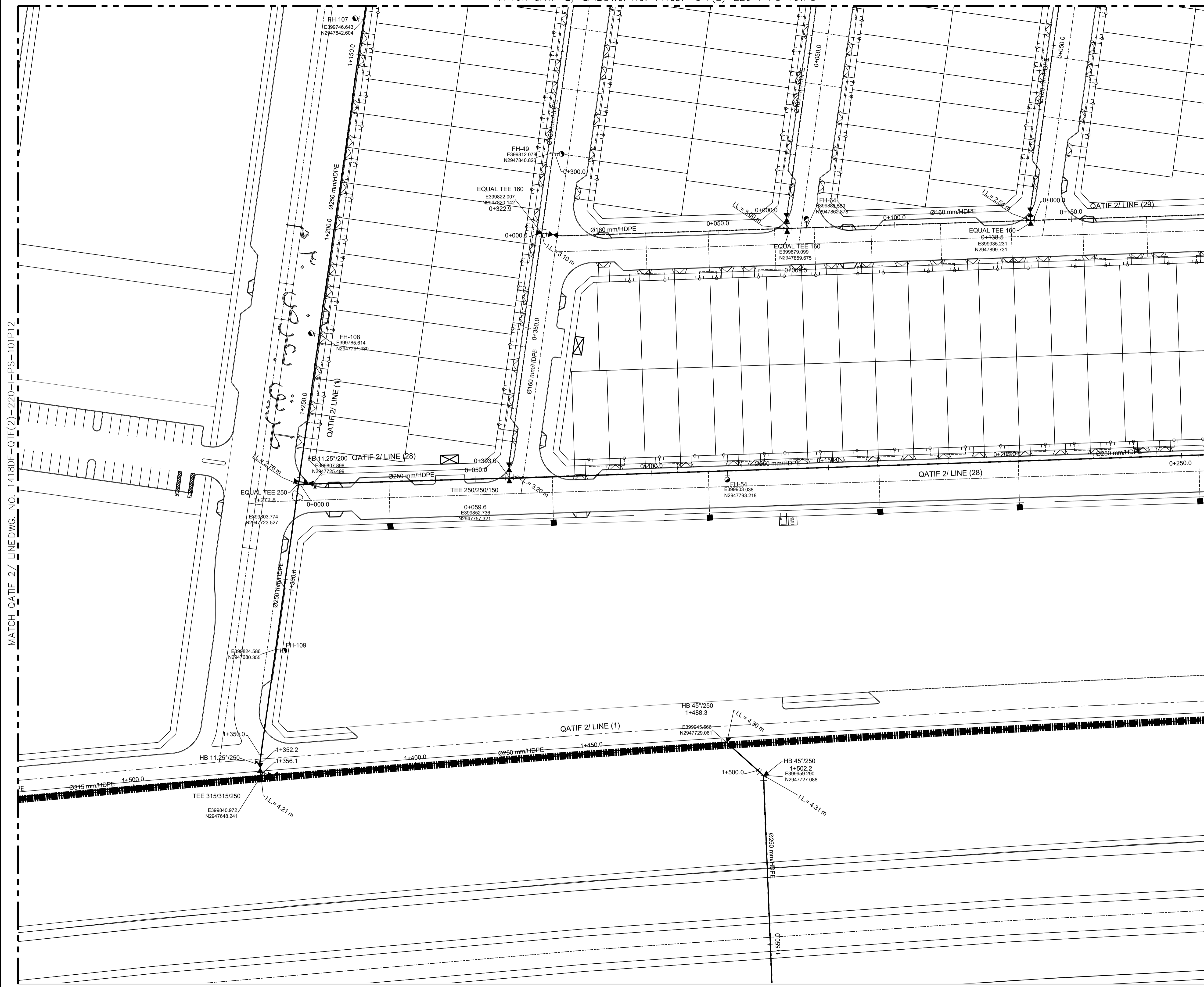
DESIGNED BY: [Signature]

APPROVED BY: [Signature]



MATCH QATIF 2/ LINE DWG. NO. 1418DF-QTF(2)-220-I-PS-101P12

MATCH QATIF 2/ LINE DWG. NO. 1418DF-QTF(2)-220-I-PS-101P14



- NOTES: -
- 1- ALL DIMENSIONS ARE IN MILLIMETER UNLESS OTHERWISE INDICATED.
  - 2- THIS DRAWING TO BE READ IN CONJUNCTION WITH ALL OTHER CONTRACT DRAWINGS AND SPECIFICATIONS.
  - 3- PIPE DIAMETERS ARE SHOWN IN MILLIMETERS FOR NOMINAL DIAMETERS UNLESS OTHERWISE INDICATED.
  - 4- ALL PIPE DIAMETER SHALL BE PN 16 FOR HDPE SDR 11.
  - 5- ALL BUILDING TIE-IN PIPES DIAMETERS AND LOCATIONS SHOULD BE COORDINATED WITH PLUMBING DRAWINGS BEFORE CONSTRUCTION.
  - 6- THE CONTRACTOR SHOULD COORDINATE WITH ALL OTHER PROPOSED, EXISTING UTILITIES FEATURES, STRUCTURES AND FOUNDATION BEFORE CONSTRUCTION.
  - 7- PIPES SHALL BE LAID SUCH THAT THE MINIMUM SOIL COVER OVER PIPE CROWN IS 1.2 METER, IN CASE OF COVER LESS THAN 1M CONCRETE ENCASEMENT SHOULD BE PROVIDED.
  - 8- ALL BURIED DUCTILE IRON PIPES, FITTING AND VALVES WILL WRAPPED WITH POLYETHYLENE COATING.
  - 9- CONTRACTOR SHALL RETRIEVE AND VERIFY ACCURACY OF ALL RELEVANT EXISTING AS-BUILT DRAWINGS AND DOCUMENTS RELATED TO THE WORK.
  - 10- CONTRACTOR SHALL CARRY OUT AND SHALL BE RESPONSIBLE FOR THE COMPLETE SHOP DRAWINGS INCLUDING UPDATE AND RE-ISSUING THE SUBMITTED DRAWINGS AFTER INCORPORATING ACTUAL SITE DATA.
  - 11- FOR POTABLE WATER DETAILS REFER TO DETAIL DRAWINGS (1418DF-QTF(2)-220-I-PS-103D01 TO 1418DF-QTF(2)-220-I-PS-103D01-D21)
  - 12- THE MENTIONED PIPE QATIF 2/ LINE DIAMETER IS NOMINAL OUTSIDE PIPE DIAMETER FOR HDPE AND NOMINAL INSIDE PIPE DIAMETER FOR DI PIPES.
  - 13- FOR UTILITY CORRIDOR AND CORRIDOR CROSS SECTION REFER TO SHEETS NO. (I-PS-600)
  - 14- HOUSE CONNECTION LOCATIONS ARE INDICATIVE, FOR EXACT LOCATIONS REFER TO THE MOMRA UTILITY ARRANGEMENT STANDARD DETAILS.
  - 15- ALL LEVELS ARE IN METERS AND REFERENCED TO MEAN SEA LEVEL (MSL), UNLESS OTHERWISE INDICATED.
  - 16- FIRE HYDRANTS ARE SPACED TO SERVE AN AREA OF 150 M DIAMETERS FOR RESIDENTIAL PREMISES AND 90M FOR COMMERCIAL PREMISES. FIRE HYDRANTS IN THE POTABLE WATER NETWORK ARE PROPOSED FOR 20 PSI PRESSURE, TO FILL FIRE TRUCKS ONLY, NOT TO DIRECT FIRE FIGHTING.

- LEGEND: -
- 160 PW Ø160mm HDPE
  - 250 PW Ø250mm HDPE
  - 315 PW Ø315mm HDPE
  - 355 PW Ø355mm HDPE
  - 400 PW Ø400mm DI
  - PROJECT BOUNDARY
  - BURIED GATE VALVE REDUCER
  - FIRE HYDRANT
  - WATER FLOW METER CHAMBER
  - SINGLE TIE-IN CONNECTION
  - Ø32mm PUBLIC TIE IN CONNECTION
  - Ø63mm DOUBLE TIE-IN CONNECTION
  - Ø32mm Ø50mm
  - AIR VALVE CHAMBER(AVC)
  - DRAIN VALVE CHAMBER(WVC)
  - END CAP WITH CONCRETE BLOCK
  - SINGLE SHUT OFF VALVE CHAMBER(SSV)
  - THREE SHUT OFF VALVE CHAMBER(TSV)
  - HORIZONTAL BEND
  - TEE

00	ISSUE FOR APPROVAL / SHOPDRAWING	10/2023
	مراجعة من اجل الموافقة	العدد
	ISSUED FOR REVISION	DATE
	مراجعة من قبل	BY

PROJECT TITLE: **GRANT LANDS PROJECT**

CLIENT:

CONSULTANT:

ENGINEERING CONTRACTOR:

DESIGN ITEM: **INFRASTRUCTURE**

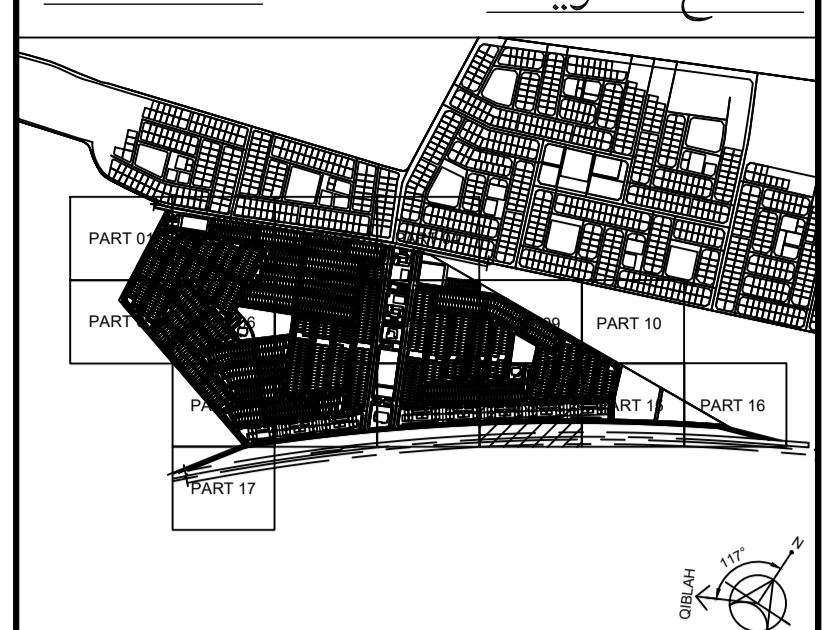
DRAWING TITLE: **QATIF SITE 2 POTABLE WATER AND FIRE FIGHTING NETWORK PART PLAN ( 13 OF 17 )**

DRAWING NO:	1418DF-QTF(2)-220-I-PS-101P13
PROJECT NO:	1418DF-QTF(2)-220-I-PS-101P13
START DATE:	10/2023
SCALE:	1:500
PHASE:	SD
DATE:	10/2023
ISSUE NO. / REV. NO.:	0
DRAWN BY:	
CHECKED BY:	
CERTIFIED BY:	
APPROVED:	
SIGN:	





KEY PLAN: مفتاح الخريطة



- NOTES: -
- 1- ALL DIMENSIONS ARE IN MILLIMETER UNLESS OTHERWISE INDICATED.
  - 2- THIS DRAWING TO BE READ IN CONJUNCTION WITH ALL OTHER CONTRACT DRAWINGS AND SPECIFICATIONS.
  - 3- PIPE DIAMETERS ARE SHOWN IN MILLIMETERS FOR NOMINAL DIAMETERS UNLESS OTHERWISE INDICATED.
  - 4- ALL PIPE DIAMETER SHALL BE PN 16 FOR HDPE SDR 11.
  - 5- ALL BUILDING TIE-IN PIPES DIAMETERS AND LOCATIONS SHOULD BE COORDINATED WITH PLUMBING DRAWINGS BEFORE CONSTRUCTION.
  - 6- THE CONTRACTOR SHOULD COORDINATE WITH ALL OTHER PROPOSED, EXISTING UTILITIES, FEATURES, STRUCTURES AND FOUNDATION BEFORE CONSTRUCTION.
  - 7- PIPES SHALL BE LAID SUCH THAT THE MINIMUM SOIL COVER OVER PIPE CROWN IS 1.2 METER, IN CASE OF COVER LESS THAN 1M CONCRETE ENCASMENT SHOULD BE PROVIDED.
  - 8- ALL BURIED DUCTILE IRON PIPES, FITTING AND VALVES WILL WRAPPED WITH POLYETHYLENE COATING.
  - 9- CONTRACTOR SHALL RETRIEVE AND VERIFY ACCURACY OF ALL RELEVANT EXISTING AS-BUILT DRAWINGS AND DOCUMENTS RELATED TO THE WORK.
  - 10- CONTRACTOR SHALL CARRY OUT AND SHALL BE RESPONSIBLE FOR THE COMPLETE SHOP DRAWINGS INCLUDING UPDATE AND RE-ISSUING THE SUBMITTED DRAWINGS AFTER INCORPORATING ACTUAL SITE DATA.
  - 11- FOR POTABLE WATER DETAILS REFER TO DETAIL DRAWINGS (1418DF-QTF(2)-220-I-PS-103D01 TO 1418DF-QTF(2)-220-I-PS-103D01-D21)
  - 12- THE MENTIONED PIPE QATIF 2/ LINE DIAMETER IS NOMINAL OUTSIDE PIPE DIAMETER FOR HDPE AND NOMINAL INSIDE PIPE DIAMETER FOR DI PIPES.
  - 13- FOR UTILITY CORRIDOR AND CORRIDOR CROSS SECTION REFER TO SHEETS NO. (I-PS-600)
  - 14- HOUSE CONNECTION LOCATIONS ARE INDICATIVE, FOR EXACT LOCATIONS REFER TO THE MOMRA UTILITY ARRANGEMENT STANDARD DETAILS.
  - 15- ALL LEVELS ARE IN METERS AND REFERENCED TO MEAN SEA LEVEL (MSL), UNLESS OTHERWISE INDICATED.
  - 16- FIRE HYDRANTS ARE SPACED TO SERVE AN AREA OF 150 M DIAMETERS FOR RESIDENTIAL PREMISES AND 90M FOR COMMERCIAL PREMISES. FIRE HYDRANTS IN THE POTABLE WATER NETWORK ARE PROPOSED FOR 20 PSI PRESSURE, TO FILL FIRE TRUCKS ONLY, NOT TO DIRECT FIRE FIGHTING.

- LEGEND: -
- 160 PW Ø160mm HDPE
  - 250 PW Ø250mm HDPE
  - 315 PW Ø315mm HDPE
  - 355 PW Ø355mm HDPE
  - 400 PW Ø400mm DI
  - PROJECT BOUNDARY
  - BURIED GATE VALVE
  - REDUCER
  - FIRE HYDRANT
  - WATER FLOW METER CHAMBER
  - Ø32mm SINGLE TIE-IN CONNECTION
  - Ø63mm PUBLIC TIE-IN CONNECTION
  - Ø32mm / Ø50mm DOUBLE TIE-IN CONNECTION
  - AIR VALVE CHAMBER(AVC)
  - DRAIN VALVE CHAMBER(WVC)
  - END CAP WITH CONCRETE BLOCK
  - SINGLE SHUT OFF VALVE CHAMBER(SSV)
  - THREE SHUT OFF VALVE CHAMBER(TSV)
  - HORIZONTAL BEND
  - TEE

00	ISSUE FOR APPROVAL / SHOPDRAWING	10/2023
	مراجعة من اجل الموافقة	من قبل
	ISSUED FOR / REVISION	DATE

PROJECT TITLE: **GRANT LANDS PROJECT**

CLIENT:

CONSULTANT:

ENGINEERING CONTRACTOR:

DESIGN ITEM: **INFRASTRUCTURE**

DRAWING TITLE: **QATIF SITE 2 POTABLE WATER AND FIRE FIGHTING NETWORK PART PLAN ( 14 OF 17 )**

DRAWING NO:	1418DF-QTF(2)-220-I-PS-101P14
PROJECT NO:	1418DF
START DATE:	OCT 2023
SCALE:	1:500
PHASE:	SD
DATE:	
CHECKED BY:	
CERTIFIED BY:	
APPROVED BY:	

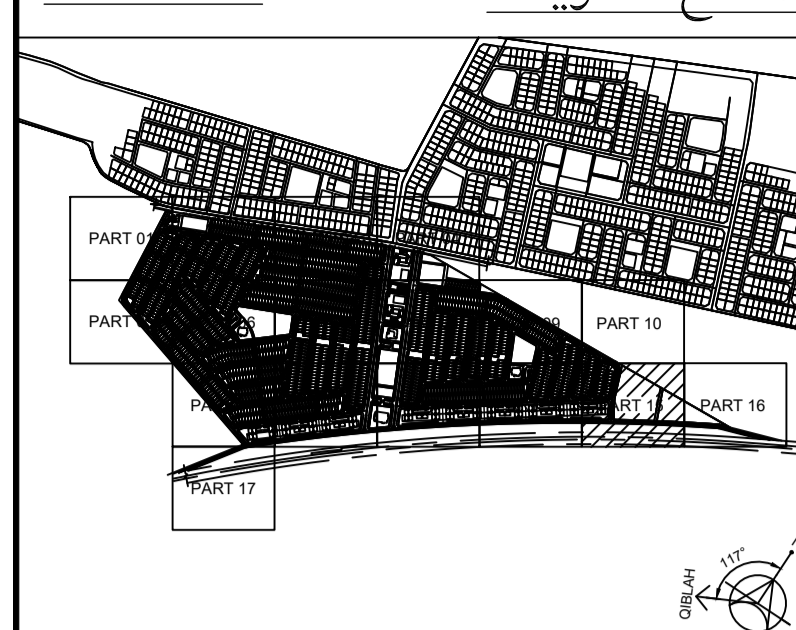
MATCH QATIF 2/ LINE DWG. NO. 1418DF-QTF(2)-220-I-PS-101P13

MATCH QATIF 2/ LINE DWG. NO. 1418DF-QTF(2)-220-I-PS-101P15





KEY PLAN: مفتاح الخريطة



- NOTES: -
- 1- ALL DIMENSIONS ARE IN MILLIMETER UNLESS OTHERWISE INDICATED.
  - 2- THIS DRAWING TO BE READ IN CONJUNCTION WITH ALL OTHER CONTRACT DRAWINGS AND SPECIFICATIONS.
  - 3- PIPE DIAMETERS ARE SHOWN IN MILLIMETERS FOR NOMINAL DIAMETERS UNLESS OTHERWISE INDICATED.
  - 4- ALL PIPE DIAMETER SHALL BE PN 16 FOR HDPE SDR 11.
  - 5- ALL BUILDING TIE-IN PIPES DIAMETERS AND LOCATIONS SHOULD BE COORDINATED WITH PLUMBING DRAWINGS BEFORE CONSTRUCTION.
  - 6- THE CONTRACTOR SHOULD COORDINATE WITH ALL OTHER PROPOSED, EXISTING UTILITIES, FEATURES, STRUCTURES AND FOUNDATION BEFORE CONSTRUCTION.
  - 7- PIPES SHALL BE LAID SUCH THAT THE MINIMUM SOIL COVER OVER PIPE CROWN IS 1.2 METER, IN CASE OF COVER LESS THAN 1M CONCRETE ENCASMENT SHOULD BE PROVIDED.
  - 8- ALL BURIED DUCTILE IRON PIPES, FITTING AND VALVES WILL WRAPPED WITH POLYETHYLENE COATING.
  - 9- CONTRACTOR SHALL RETRIEVE AND VERIFY ACCURACY OF ALL RELEVANT EXISTING AS-BUILT DRAWINGS AND DOCUMENTS RELATED TO THE WORK.
  - 10- CONTRACTOR SHALL CARRY OUT AND SHALL BE RESPONSIBLE FOR THE COMPLETE SHOP DRAWINGS INCLUDING UPDATE AND RE-ISSUING THE SUBMITTED DRAWINGS AFTER INCORPORATING ACTUAL SITE DATA.
  - 11- FOR POTABLE WATER DETAILS REFER TO DETAIL DRAWINGS (1418DF-QTF(2)-220-I-PS-103D01 TO 1418DF-QTF(2)-220-I-PS-103D01-D21)
  - 12- THE MENTIONED PIPE QATIF 2/ LINE DIAMETER IS NOMINAL OUTSIDE PIPE DIAMETER FOR HDPE AND NOMINAL INSIDE PIPE DIAMETER FOR DI PIPES.
  - 13- FOR UTILITY CORRIDOR AND CORRIDOR CROSS SECTION REFER TO SHEETS NO. (I-PS-600)
  - 14- HOUSE CONNECTION LOCATIONS ARE INDICATIVE, FOR EXACT LOCATIONS REFER TO THE MOMRA UTILITY ARRANGEMENT STANDARD DETAILS.
  - 15- ALL LEVELS ARE IN METERS AND REFERENCED TO MEAN SEA LEVEL (MSL), UNLESS OTHERWISE INDICATED.
  - 16- FIRE HYDRANTS ARE SPACED TO SERVE AN AREA OF 150 M DIAMETERS FOR RESIDENTIAL PREMISES AND 90M FOR COMMERCIAL PREMISES. FIRE HYDRANTS IN THE POTABLE WATER NETWORK ARE PROPOSED FOR 20 PSI PRESSURE, TO FILL FIRE TRUCKS ONLY, NOT TO DIRECT FIRE FIGHTING.

- LEGEND: -
- 160 PW Ø160mm HDPE
  - 250 PW Ø250mm HDPE
  - 315 PW Ø315mm HDPE
  - 355 PW Ø355mm HDPE
  - PW Ø400mm DI
  - PROJECT BOUNDARY
  - BURIED GATE VALVE
  - REDUCER
  - FIRE HYDRANT
  - WATER FLOW METER CHAMBER
  - Ø32mm SINGLE TIE-IN CONNECTION
  - Ø63mm PUBLIC TIE-IN CONNECTION
  - Ø32mm / Ø50mm DOUBLE TIE-IN CONNECTION
  - AIR VALVE CHAMBER(AVC)
  - DRAIN VALVE CHAMBER(WVC)
  - END CAP WITH CONCRETE BLOCK
  - SINGLE SHUT OFF VALVE CHAMBER(SSV)
  - THREE SHUT OFF VALVE CHAMBER(TSV)
  - HORIZONTAL BEND
  - TEE

00	ISSUE FOR APPROVAL / SHOPDRAWING	10/2023
	صادرة من اجل الموافقة	اليوم
	ISSUED FOR / REVISION	DATE

PROJECT TITLE: **GRANT LANDS PROJECT**

CLIENT:

CONSULTANT:

ENGINEERING CONTRACTOR:

DESIGN ITEM: **INFRASTRUCTURE**

DRAWING TITLE: **QATIF SITE 2 POTABLE WATER AND FIRE FIGHTING NETWORK PART PLAN ( 15 OF 17 )**

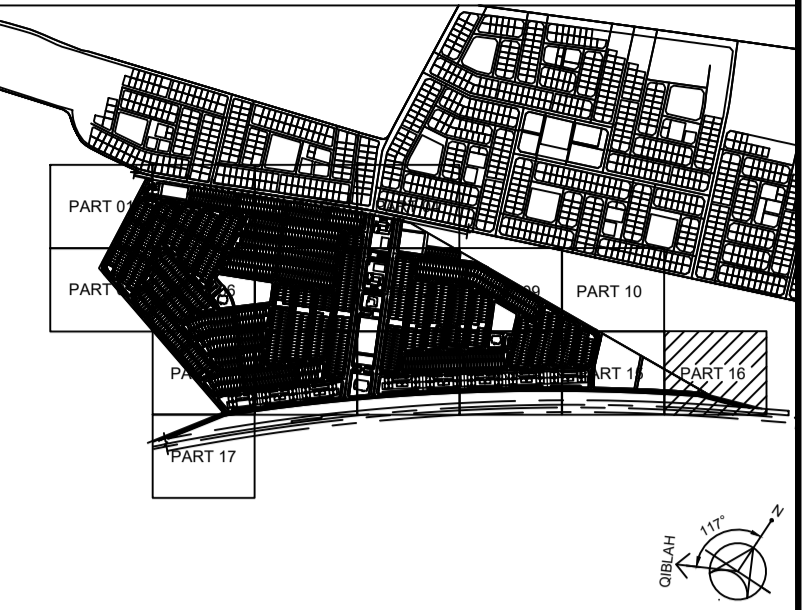
1418DF-QTF(2)-220-I-PS-101P15	0
PROJECT NO. / START DATE	SCALE
1418DF-QTF(2)-220-I-PS-101P15	1:500
DATE	SCALE
10/2023	A1 SD
DRAWN BY	CHECKED BY
CERTIFIED BY	APPROVED
SIGN:	SIGN:



MATCH QATIF 2 / LINE DWG. NO. 1418DF-QTF(2)-220-I-PS-101P15



KEY PLAN: مفتاح الخريطة



- NOTES: -
- 1- ALL DIMENSIONS ARE IN MILLIMETER UNLESS OTHERWISE INDICATED.
  - 2- THIS DRAWING TO BE READ IN CONJUNCTION WITH ALL OTHER CONTRACT DRAWINGS AND SPECIFICATIONS.
  - 3- PIPE DIAMETERS ARE SHOWN IN MILLIMETERS FOR NOMINAL DIAMETERS UNLESS OTHERWISE INDICATED.
  - 4- ALL PIPE DIAMETER SHALL BE PN 16 FOR HDPE SDR 11.
  - 5- ALL BUILDING TIE-IN PIPES DIAMETERS AND LOCATIONS SHOULD BE COORDINATED WITH PLUMBING DRAWINGS BEFORE CONSTRUCTION.
  - 6- THE CONTRACTOR SHOULD COORDINATE WITH ALL OTHER PROPOSED, EXISTING UTILITIES, FEATURES, STRUCTURES AND FOUNDATION BEFORE CONSTRUCTION.
  - 7- PIPES SHALL BE LAID SUCH THAT THE MINIMUM SOIL COVER OVER PIPE CROWN IS 1.2 METER, IN CASE OF COVER LESS THAN 1M CONCRETE ENCASMENT SHOULD BE PROVIDED.
  - 8- ALL BURIED DUCTILE IRON PIPES, FITTING AND VALVES WILL WRAPPED WITH POLYETHYLENE COATING.
  - 9- CONTRACTOR SHALL RETRIEVE AND VERIFY ACCURACY OF ALL RELEVANT EXISTING AS-BUILT DRAWINGS AND DOCUMENTS RELATED TO THE WORK.
  - 10- CONTRACTOR SHALL CARRY OUT AND SHALL BE RESPONSIBLE FOR THE COMPLETE SHOP DRAWINGS INCLUDING UPDATE AND RE-ISSUING THE SUBMITTED DRAWINGS AFTER INCORPORATING ACTUAL SITE DATA.
  - 11- FOR POTABLE WATER DETAILS REFER TO DETAIL DRAWINGS (1418DF-QTF(2)-220-I-PS-103D01 TO 1418DF-QTF(2)-220-I-PS-103D01-D21)
  - 12- THE MENTIONED PIPE QATIF 2 / LINE DIAMETER IS NOMINAL OUTSIDE PIPE DIAMETER FOR HDPE AND NOMINAL INSIDE PIPE DIAMETER FOR DI PIPES.
  - 13- FOR UTILITY CORRIDOR AND CORRIDOR CROSS SECTION REFER TO SHEETS NO. (I-PS-600)
  - 14- HOUSE CONNECTION LOCATIONS ARE INDICATIVE, FOR EXACT LOCATIONS REFER TO THE MOMRA UTILITY ARRANGEMENT STANDARD DETAILS.
  - 15- ALL LEVELS ARE IN METERS AND REFERENCED TO MEAN SEA LEVEL (MSL), UNLESS OTHERWISE INDICATED.
  - 16- FIRE HYDRANTS ARE SPACED TO SERVE AN AREA OF 150 M DIAMETERS FOR RESIDENTIAL PREMISES AND 90M FOR COMMERCIAL PREMISES. FIRE HYDRANTS IN THE POTABLE WATER NETWORK ARE PROPOSED FOR 20 PSI PRESSURE, TO FILL FIRE TRUCKS ONLY, NOT TO DIRECT FIRE FIGHTING.

LEGEND: -

160	PW Ø160mm HDPE
250	PW Ø250mm HDPE
315	PW Ø315mm HDPE
355	PW Ø355mm HDPE
400	PW Ø400mm DI
---	PROJECT BOUNDARY
⊗	BURIED GATE VALVE
⊘	REDUCER
⊕	FIRE HYDRANT
⊙	WATER FLOW METER CHAMBER
⊕	SINGLE TIE-IN CONNECTION
⊕	PUBLIC TIE-IN CONNECTION
⊕	DOUBLE TIE-IN CONNECTION
⊕	AIR VALVE CHAMBER(AVC)
⊕	DRAIN VALVE CHAMBER(WVC)
⊕	END CAP WITH CONCRETE BLOCK
⊕	SINGLE SHUT OFF VALVE CHAMBER(SSV)
⊕	THREE SHUT OFF VALVE CHAMBER(TSV)
⊕	HORIZONTAL BEND
⊕	TEE

00	ISSUE FOR APPROVAL / SHOPDRAWING	10/2023
	صادرة من اجل الموافقة	اليوم
	ISSUED FOR / REVISION	DATE

PROJECT TITLE: **GRANT LANDS PROJECT**

CLIENT: **الهيئة العامة للغابات والرياحات**

CONSULTANT: **دار الرياض**  
DAR AL RIYADH  
DESIGN & CONSTRUCTION MANAGEMENT SERVICES

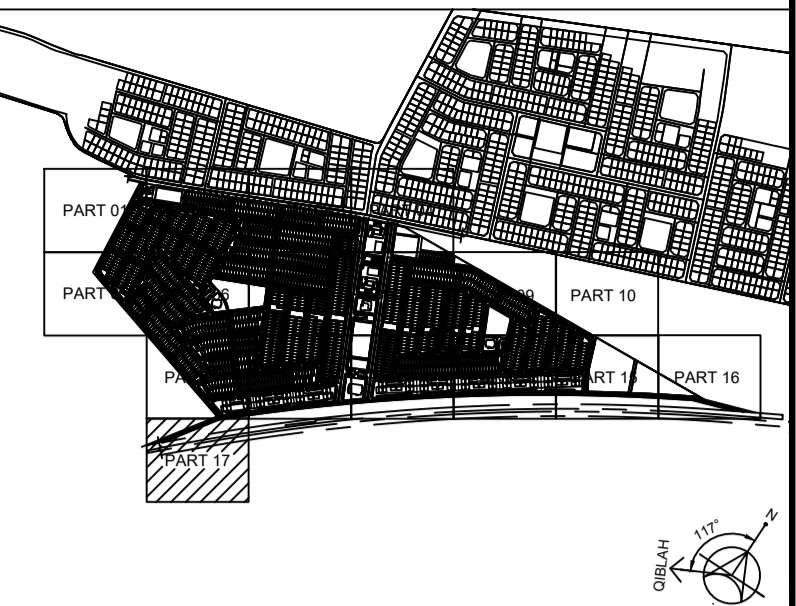
ENGINEERING CONTRACTOR: **الرواف للمقاولات**

DESIGN ITEM: **INFRASTRUCTURE**

DRAWING TITLE: **QATIF SITE 2 POTABLE WATER AND FIRE FIGHTING NETWORK PART PLAN ( 16 OF 17 )**

1418DF-QTF(2)-220-I-PS-101P16	1:500	SD
PROJECT NO. / START DATE	SCALE	PHASE
1418DF-QTF(2)-220-I-PS-101P16	1:500	SD
OCT 2023		
DRAWN BY	CHECKED BY	CERTIFIED BY
SIGN:	SIGN:	SIGN:





- NOTES: -
- 1- ALL DIMENSIONS ARE IN MILLIMETER UNLESS OTHERWISE INDICATED.
  - 2- THIS DRAWING TO BE READ IN CONJUNCTION WITH ALL OTHER CONTRACT DRAWINGS AND SPECIFICATIONS.
  - 3- PIPE DIAMETERS ARE SHOWN IN MILLIMETERS FOR NOMINAL DIAMETERS UNLESS OTHERWISE INDICATED.
  - 4- ALL PIPE DIAMETER SHALL BE PN 16 FOR HDPE SDR 11.
  - 5- ALL BUILDING TIE-IN PIPES DIAMETERS AND LOCATIONS SHOULD BE COORDINATED WITH PLUMBING DRAWINGS BEFORE CONSTRUCTION.
  - 6- THE CONTRACTOR SHOULD COORDINATE WITH ALL OTHER PROPOSED, EXISTING UTILITIES, FEATURES, STRUCTURES AND FOUNDATION BEFORE CONSTRUCTION.
  - 7- PIPES SHALL BE LAID SUCH THAT THE MINIMUM SOIL COVER OVER PIPE CROWN IS 1.2 METER, IN CASE OF COVER LESS THAN 1M CONCRETE ENGASEMENT SHOULD BE PROVIDED.
  - 8- ALL BURIED DUCTILE IRON PIPES, FITTING AND VALVES WILL WRAPPED WITH POLYETHYLENE COATING.
  - 9- CONTRACTOR SHALL RETRIEVE AND VERIFY ACCURACY OF ALL RELEVANT EXISTING AS-BUILT DRAWINGS AND DOCUMENTS RELATED TO THE WORK.
  - 10- CONTRACTOR SHALL CARRY OUT AND SHALL BE RESPONSIBLE FOR THE COMPLETE SHOP DRAWINGS INCLUDING UPDATE AND RE-ISSUING THE SUBMITTED DRAWINGS AFTER INCORPORATING ACTUAL SITE DATA.
  - 11- FOR POTABLE WATER DETAILS REFER TO DETAIL DRAWINGS (1418DF-QTF(2)-220-I-PS-103D01 TO 1418DF-QTF(2)-220-I-PS-103D01-D21)
  - 12- THE MENTIONED PIPE QATIF 2/ LINE DIAMETER IS NOMINAL OUTSIDE PIPE DIAMETER FOR HDPE AND NOMINAL INSIDE PIPE DIAMETER FOR DI PIPES.
  - 13- FOR UTILITY CORRIDOR AND CORRIDOR CROSS SECTION REFER TO SHEETS NO. (I-PS-600)
  - 14- HOUSE CONNECTION LOCATIONS ARE INDICATIVE, FOR EXACT LOCATIONS REFER TO THE MOMRA UTILITY ARRANGEMENT STANDARD DETAILS.
  - 15- ALL LEVELS ARE IN METERS AND REFERENCED TO MEAN SEA LEVEL (MSL), UNLESS OTHERWISE INDICATED.
  - 16- FIRE HYDRANTS ARE SPACED TO SERVE AN AREA OF 150 M DIAMETERS FOR RESIDENTIAL PREMISES AND 90M FOR COMMERCIAL PREMISES. FIRE HYDRANTS IN THE POTABLE WATER NETWORK ARE PROPOSED FOR 20 PSI PRESSURE, TO FILL FIRE TRUCKS ONLY, NOT TO DIRECT FIRE FIGHTING.

LEGEND: -

	PW Ø160mm HDPE
	PW Ø250mm HDPE
	PW Ø315mm HDPE
	PW Ø355mm HDPE
	PW Ø400mm DI
	PROJECT BOUNDARY
	BURIED GATE VALVE
	REDUCER
	FIRE HYDRANT
	WATER FLOW METER CHAMBER
	SINGLE TIE-IN CONNECTION
	PUBLIC TIE-IN CONNECTION
	DOUBLE TIE-IN CONNECTION
	AIR VALVE CHAMBER(AVC)
	DRAIN VALVE CHAMBER(WVC)
	END CAP WITH CONCRETE BLOCK
	SINGLE SHUT OFF VALVE CHAMBER(SSV)
	THREE SHUT OFF VALVE CHAMBER(TSV)
	HORIZONTAL BEND
	TEE

00	ISSUE FOR APPROVAL / SHOPDRAWING	10/2023
من قبل	مصدره من اجل المراجعة	اليوم
BY	ISSUED FOR / REVISION	DATE

PROJECT TITLE: **GRANT LANDS PROJECT**

CLIENT:

CONSULTANT:

ENGINEERING CONTRACTOR:

DESIGN ITEM: **INFRASTRUCTURE**

DRAWING TITLE: **QATIF SITE 2 POTABLE WATER AND FIRE FIGHTING NETWORK PART PLAN ( 17 OF 17 ) - NOT USED**

DRAWING NO: **1418DF-QTF(2)-220-I-PS-101P17**

PROJECT NO	1418DF	START DATE	1 OCT 2023	SCALE	1:500	DATE	1 OCT 2023	PHASE	SD
DRAWN BY		CHECKED BY		CERTIFIED BY		APPROVED			

SIGN: